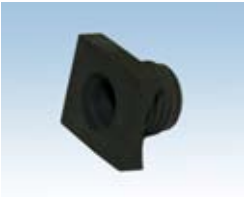




Accessories



Rubber Saddles



JetFlex® Disc Diffusers with 3/4" NPT nipple may be installed onto all plastic pipes suitable for waste water and hot air. Grommets are suitable for all plastic pipes with outer diameter between 89 and 141 mm (3½ and 5 9/16 inch). Wall thickness for the Universal Saddle should be between 4 and 8 mm (5/32 and 5/16 inch). The exertion force for this saddle is approximately 850 N with discs properly installed. Universal Saddles work with all JetFlex® disc diffuser with 3/4" male thread. Type 4.7 and 6.3 are intended for disc type HD 235 and HD 325, predecessors of today's family of JetFlex® disc diffusers. For further details please refer to our Technical Information "Installation of JetFlex® Disc Diffusers using EPDM-Grommets" at www.jaeger-envirotech.com.

part-no.	description	material	colour
01004627	rubber saddle type 4.7	EPDM	black
01005199	rubber saddle universal	EPDM	black
01005816	rubber saddle type 6.3	EPDM	black

PVC Saddles



PVC Saddles are made from U-PVC and may be glued onto 90 and 110 mm PVC pipes (U-PVC and/or C-PVC). They are equipped with a 3/4" NPT female thread. The opening in the header pipe should measure 36 ± 0.5 mm. You may rectify slight deviations in diameter and position of bore by accurately positioning the saddle on top of the pipe, thread pointing exactly upwards. For detailed information on gluing the saddle to the header please refer to instructions from glue manufacturers, e.g. Tangit by Henkel at http://www.henkel.com/com/contentdata/96385_Tangit_Pipe_Adhesives_Installation_Instructions.pdf or equivalent. You may have to secure the position of the clamp by cable ties or similar means for 5 minutes or more depending on temperature.

part-no.	description	material	colour
02003662	saddle 90 mm	PVC	white
02003663	saddle 110 mm	PVC	white

Check Valve (for JetFlex® HD200, HD270 and HD340)



Check valves (non-return-valves) consist of a PP housing containing an 8 mm SS-ball. The stainless-steel ball prevents backflow of sludge into headers in case of damage to the membrane of the disc. Check valves alter the headloss characteristic of JetFlex® disc diffusers, so do not install discs with and without check valve in the same tank or on the same grid. Check valves work best if discs are installed using our clamp adaptors 90N or our rubber saddles, see above.

part-no.	description	material	colour
02003636	non-return valve	PPC 30%GF/SS	white

Clamp Adapters

Clamp adapters come in a variety of sizes and threads. They require a 40+0 -1 mm hole in the header pipe. For disc diffusers this hole must point exactly upwards. Short tube diffusers (max. 560 mm length) have to be levelled within ± 5 mm at the ends, so both 40 mm holes must be aligned horizontally. All clamps come with a cable-tie-like mounting aid freeing your hands during installation. Clamps are installed in pairs. You need two threaded ones (1" male) for a pair of tubes or one threaded and one blind one for a single tube. Discs require one threaded and one blind clamp. To close an unneeded hole in the header you may use two blind clamps with additional flat seals.

Clamp adapters 90N are especially for 90 mm headers with existing openings of about 15 mm. You may connect any JetFlex® disc diffuser with a pair of 90N-clamps. The threaded clamp adapter easily accommodates our check-valve giving you full compatibility, if necessary.

Clamp Adapters with male thread

part-no.	description	material	colour
02003754	clamp adapter 114.3 with 1" male thread	PP20%GF/SI/SS	black
02003902	clamp adapter 110 with 1" male thread	PP20%GF/SI/SS	black



Clamp Adapters with female thread

part-no.	description	material	colour
02003756	clamp adapter 114.3 with R 3/4" female thread	PP20%GF/SI/SS	black
02003904	clamp adapter 110 with R 3/4" female thread	PP20%GF/SI/SS	black
02003977	clamp adapter 90N with R 3/4" thread	PP20%GF/SI/SS	black



Clamp Adapters without thread

part-no.	description	material	colour
02003755	clamp adapter 114.3 without thread	PP20%GF/SS	black
02003903	clamp adapter 110 without thread	PP20%GF/SS	black
02003978	clamp adapter 90N without thread	PP20%GF/SS	black



Blind Plugs



Many tube diffusers in Europe are installed onto square-tube-headers. Occasionally there is the need to omit individual diffusers due to obstructions in the tank etc. Blind plugs allow you to install a single diffuser either side of the header. Of course, a pair of diffusers may be replaced by a pair of blind plugs, too. Diffusers with 3/4" NPT are not necessarily installed in pairs, so the applicable blind plug usually serves as a cap or plug to shut off unused connections.

part-no.	description	material	colour
02003667	blind plug 3/4"	PP30%GF	green
02003668	blind plug 1"	PP30%GF	blue
02003670	blind plug 3/4" NPT	PP30%GF	grey

Adapters



Existing diffusers on square tubes may be mounted using different connectors and openings. We carry adapters for the following openings: 40, 45, and 46 mm. The existing connectors are replaced by our 1" inch stainless-steel connector, see further below.

part-no.	description	material	colour
02003762	adapter G1-45	PP20%GF	black
02003791	adapter G1_46x70	PP20%GF	black
02003669	flange seal 40 mm	Desmopan	white

Sealing for Adapters and Tube Diffusers JetFlex® TD65-2



The above mentioned adapters require an additional seal or O-ring. There is a special seal for our tube diffusers TD65-2-G1 as well.

part-no.	description	material	colour
06018329	gasket TD65-2-G1	Silicone	red
37003562	o-ring 44 x 4 for G1-45	Silicone	red
06018584	gasket G1_46x70	Silicone	red

Sealing for Tube Diffusers JetFlex® TD63-0 (formerly TD 63/2xxx)

Tube diffusers TD 63-0 usually include all necessary sealing. If for any reason diffusers are disassembled we strongly recommend replacing the seals upon re-installation.

part-no.	description	material	colour
06017160	gasket 63 x 27 x 4 mm	EPDM	black
06017161	gasket 63 x 34 x 4 mm	EPDM	black
06017163	gasket 63 x 27 x 4 mm	Silicone	red
06017164	gasket 63 x 34 x 4 mm	Silicone	red



Stainless-steel clamps

Replacing sleeves requires new clamps to secure sleeves on support tubes. We do not recommend the use of worm-gear-clamps as these clamps may squeeze and crimp the sleeve. This may damage the sleeve or cause air-leakage at the clamp. See our installation instructions for details.

part-no.	description	material
12000602	clamp 68.0 mm diameter	V2A
12000603	clamp 69.5 mm diameter	V2A
12000607	clamp 96.5 mm diameter	V2A
12000679	clamp 75.5 mm diameter	V2A



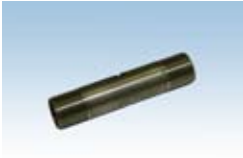
Pincer

This pincer is ideally suited to close above mentioned stainless-steel clamps. A regular pair of pliers may deform the ear of the clamp and is regarded as an emergency repair tool only.

part-no.	description
91002831	pincer



Stainless-Steel Connectors (Square headers)



For almost all kinds of square and rectangular pipes there is a connector for our tube diffuser type TD63-0. All other lengths are available on request.

part-no.	description	material
21000601	connector 3/4", length 130 mm	V2A
21000602	connector 3/4", length 150 mm	V2A
21000603	connector 1", length 130 mm	V2A
21000604	connector 1", length 150 mm	V2A
21000605	connector 1", length 100 mm	V2A
21000606	connector 1", length 170 mm	V2A
21000607	connector 1", length 200 mm	V2A
21000639	connector 1", length 180 mm	V2A

Plastic connectors / Saddles (Round headers)



In order to join tube diffusers intended for square headers to 4-inch round headers there is a special connecting set available. Each set consists of 2 saddles and one connector threaded on both ends with 1" male threads. Other pipe dimensions and threading in preparation.

part-no.	description	material	colour
01005958	saddle for 4" pipes	PP30%GF/EPDM	black
02003713	connector for 4" pipes	PA6 GF25	black

End Plug Brace



Tube diffusers may be exposed to high water currents near blade mixers etc. causing excessive oscillation especially of very long diffusers. In order to avoid flapping of diffusers this special end cap may be inserted into the tube and fixed to the ground. The end cap does not hamper water flowing into the open end of the tube keeping the buoyancy of the tube low.

part-no.	description	material	colour
02003661	end plug for TD63	PP	green

Pipe Support



Pipe supports are made from stainless steel (304/316) with adjustable height for laterals and headers in order to achieve optimum uniformity of aeration. Available sizes are for 4", 6" and 8" laterals and headers as well as most metric sizes. Please, call for details.

description	material
pipe support	SS



CÔNG TY CỔ PHẦN CÔNG NGHIỆP TIẾN HƯNG

TRUNG TÂM PHÂN PHỐI VÀ BẢO HÀNH

VPĐD: 62D/23 Nguyễn Hồng, P. 11, Q. Bình Thạnh, TP. HCM, Việt Nam
Tel : (84-8) 36008213 - Fax : (84-8) 35167178
Email : tienhung@thucorp.com

