



HYDRO PROKAV

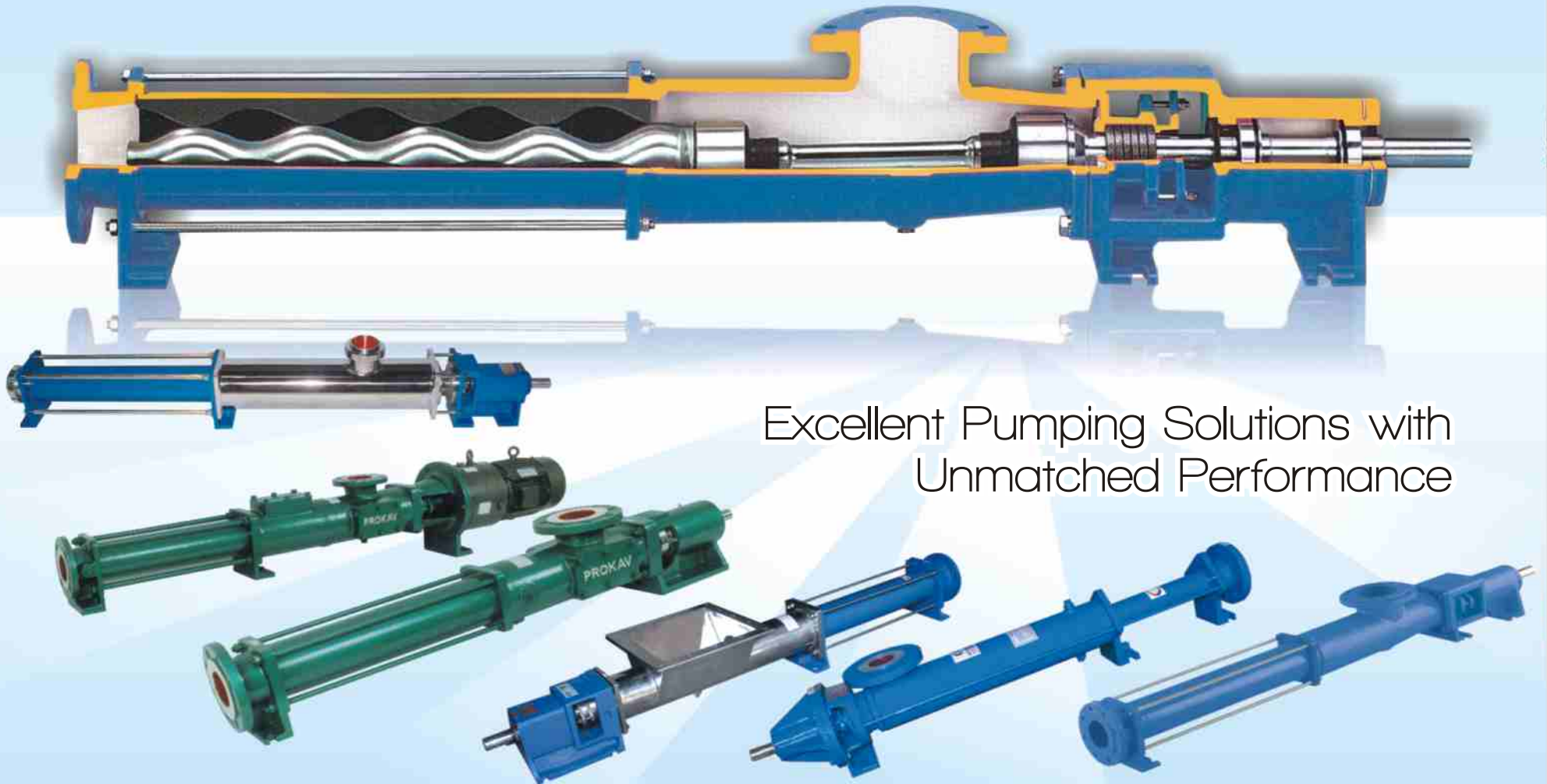
Proven Performance for Better Pumping Solutions

NOT ORIGINAL



| Home | Profile | Products | Infrastructure | Quality Standards | Feedback | Contact | Exit |

PK-SERIES



Excellent Pumping Solutions with
Unmatched Performance



HYDRO PROKAV

Proven Performance for Better Pumping Solutions

NOT ORIGINAL



[| Home](#) | [| Profile](#) | [| Products](#) | [| Infrastructure](#) | [| Quality Standards](#) | [| Feedback](#) | [| Contact](#) | [| Exit](#) |

| [Profile](#) |

• Hydro Prokav is the Corporate Company striving with Energy and Persistence towards the goal of attaining outstanding Quality through-out its Business lifeCycle. • **HYDRO PROKAV PUMPS INDIA PRIVATE LIMITED**, a unit of BKG Group of Companies is located in the Industrial City of Coimbatore in Tamil Nadu, SouthIndia. • H P Pumps has a proven track record in the field of Engineering with largecustomer base through out India for the past two decades.

The group is engaged in manufacture of various process machineries like: • Filter Press • Classifiers • Cyclones • Special Centrifugal Pumps • High speed Circular Knitting Machines and • Other special purpose Machines Needed for various industries like : • Chemical • Paper • Pharma • Effluent • Fertilizer • Textile etc. • Ceramics • Sugar • Food Processing

The group manufactures a complete range of progressive cavity pumps with a tieup with a leading consultant based at USA and is now a market leader not only in India but also in the global market. Right from Australia to USA - our global market is wide and far reaching. Presently we are catering to more than 2000 Customers in our Domestic Market while with a spread of more than 10,000 Customers in Global Scenario and had successfully provided pumping solutions for more than 25,000 Fluids. Hydro Prokav is showing 2 Fold increase in Growth each and every year.



PK-Series

• KX-PK-CD | KXCC-PK-CD

• KX-PK-CF | KXCC-PK-CF

• KX-PK-SF | KXCC-PK-SF

• KXW-PK-MS | KXWCC-PK-MS

• KXW-PK-SF | KXWCC-PK-SF



Products : KX-PK-CD | KXCC-PK-CD

Capacity : 200 M³/ Hr
 Head : 48 bar
 Temperature : 200° C
 Viscosity : 1,00,000 Cst

Dimensions
KX-PK-CD
KXCC-PK-CD

Performance Curve
Single Stage
Double Stage
Four Stage

KX-CD / KXCC-CD Pumps are of cast iron construction with various metallurgy of rotating parts like Alloy steel, Tool Steel, SS 304, SS 316. Shaft Sealing ensured by soft gland packing / Mechanical seal. Torsion free metal bonded stator and double sealed universal joints as pin & bush joints or Special Designed like Gear Joints or Cardon joints as per customer requirements for longer service life and improved efficiency resulted in trouble free performance of these pumps.

Compact Configuration of Screw pumps in which the Pumping Parts are coupled directly to the drive thereby eliminating the Bearing Housing. Suitable for restricted spaces of operation or Mobile Pump Sets apart from low maintenance and cost effectiveness ensuring long service life.

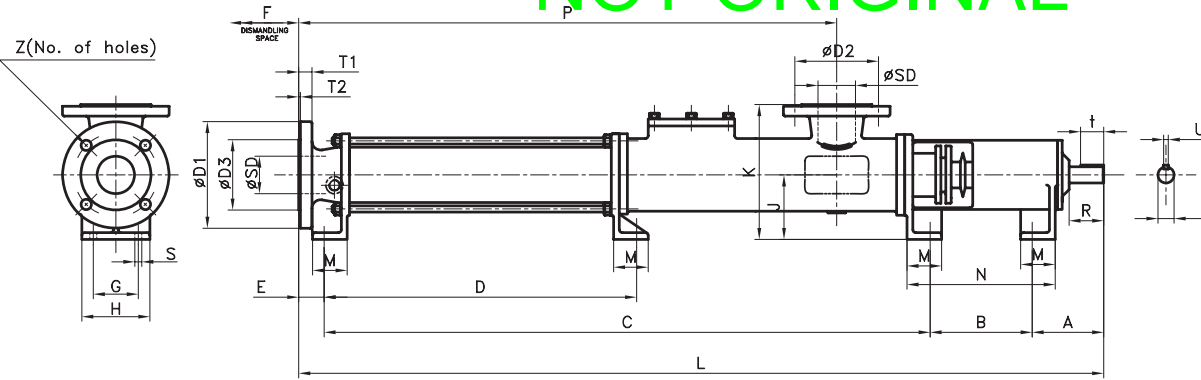
These Series pumps find application in :

- Rice Bran Oil
- Acids
- Instant Tea
- Soap Solution
- Acrylic Emulsion
- Floral Concentrate
- Sizing Paste
- Alkaline Slurry
- latex
- Sodium silicate
- Al. Hydroxide Gel
- lime Slurry
- Sugar Juice
- Carbonate beverage
- lube Oil
- Tribasic lead Sulphate
- Chemical Slurry
- Magma
- Vegetable Oil
- Ceramic Slurry
- Molasses
- Viscose
- Coating Mix
- Oil Slurry
- Yeast
- Domestic Effluent
- Paint
- Brewery
- Detergent Slurry
- Paper Pulp
- Ceramics
- Dyestuff
- Printing color
- Chemicals
- Emulsion
- Precipitated Calcium
- Construction
- Effluent Carbonate
- Cosmetics
- Explosive Slurry
- Resin
- Detergents
- Distillery
- Dyestuff
- Effluent
- Edible Oil
- Fertilizer
- Marine
- Mining
- Pharmaceutical
- Paper
- Paints
- Sewage Treatment
- Soap
- Sugar & Textile etc



DIMENSION

NOT ORIGINAL



TYPE & SIZE OF PUMP	BASIC DIMENSIONS														FLANGE DIMENSIONS						SHAFT ESTENSIONS						
	A	B	C	D	E	F	G	H	J	K	L	M	N	P	S	SD	T1	T2	D1	D2	D3	Z	d	R	t	U	
KX-0.4PK1	105	133	400	-	36	275	50	75	90	165	668	45	193	296	10	25	16	2	115	85	68	4	22	50	40	6	
KX-0.4PK2			450								718			346								x					ø14
KX-1PK1	105	133	424	-	36	275	50	75	90	165	692	45	193	320	10	25	16	2	115	85	68	4	22	50	40	6	
KX-1PK2			504								772			400								x					ø14
KX-2.6PK1	105	133	456	-	36	275	50	75	90	165	730	45	193	358	10	32	18	2	140	100	78	4	22	50	40	6	
KX-2.6PK2			666								830			463								x					ø18
KX-6PK1	105	133	481	-	36	275	50	75	90	165	755	45	193	383	10	32	18	2	140	100	78	4	22	50	40	6	
KX-6PK2			606								880			508								x					ø18
KX-13PK1	106	177	481	-	51	355	70	110	100	200	991	50	237	561	12	50	20	3	165	125	102	4	22	50	40	6	
KX-13PK2			606								1200			770								x					ø18
KX-13PK4	125	177	1357	847	44	450	78	118	112	252	1703	60	257	1239	12	65	20	3	185	145	122	4	28	60	40	8	
KX-25PK1	157	203	1013	368	44	575	92	142	132	272	1417	70	293	833	15	80	22	3	200	160	138	8	32	80	60	10	
KX-25PK2			1263	618							1667			1083								ø18					
KX-40PK1	166	228	1193	412	47	700	110	152	160	320	1636	75	328	1006	18	100	24	3	220	180	158	8	38	80	60	10	
KX-40PK2			1639	858							3672			1452								ø18					
KX-40PK4	200	270	2337	1310	64	925	130	175	160	345	2871	75	370	2071	18	125	26	3	250	210	188	8	48	110	80	14	
KX-62PK1			1601	574							2135			1335								x					ø18
KX-62PK2			1960	933							2494			1694								ø18					
KX-90PK-1L			1819	792							2353			1553								ø18					
KX-100PK1	253	342	2060	1294	51	1200	172	232	200	440	2706	100	482	1706	22	150	26	3	285	240	212	8	60	140	100	18	
KX-100PK2			2640	1359							3286			2286								ø22					

SINGLE STAGE

DOUBLE STAGE

FOUR STAGE

• Back to Product

• KX - PK -CD / KXCC - PK - CD

• KX - PK - CF / KXCC - PK - CF

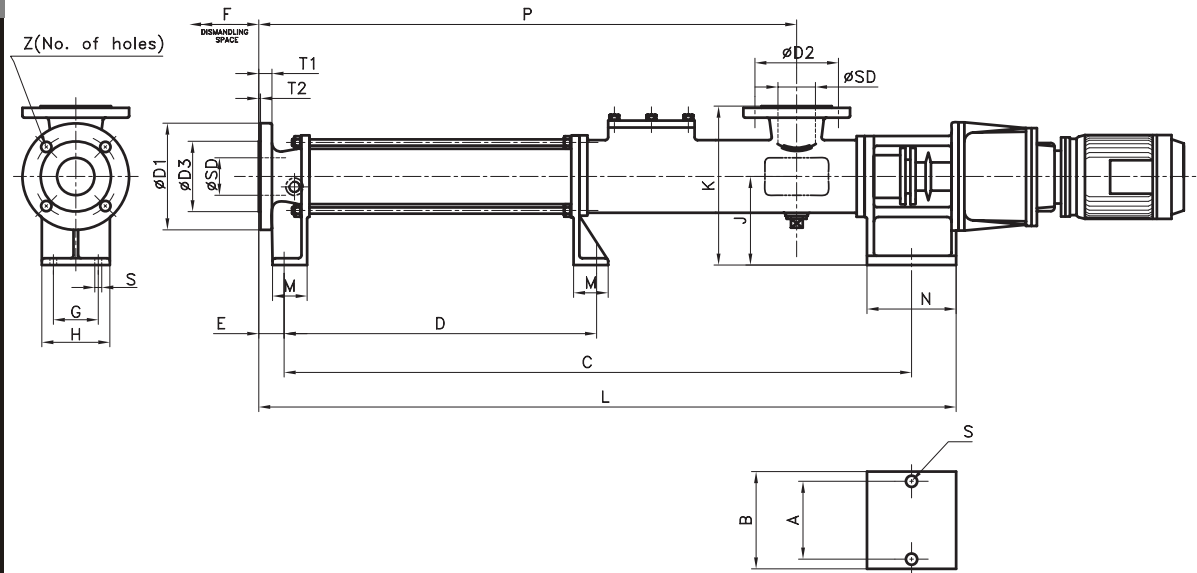
• KX - PK - SF / KXCC - PK - SF

• KXW - PK - MS / KXWCC PK - MS

• KXW - PK - SF / KXWCC - PK - SF

DIMENSION

NOT ORIGINAL



- Back to Product
- KX - PK -CD / KXCC - PK - CD
- KX - PK - CF / KXCC - PK - CF
- KX - PK - SF / KXCC - PK - SF
- KXW - PK - MS / KXWCC PK - MS
- KXW - PK - SF / KXWCC - PK - SF

TYPE & SIZE OF PUMP	BASIC DIMENSIONS														FLANGE DIMENSIONS								
	A	B	C	D	E	F	G	H	J	K	L	M	N	P	S	SD	T1	T2	D1	D2	D3	Z	
KXCC-0.4PK1	120	150	417	-	36	275	50	75	120	195	524	45	132	296	10	25	16	2	115	85	68	4	x
KXCC-0.4PK2			467								574			346									
KXCC-1PK1	120	150	481	-	36	275	50	75	120	195	552	45	132	320	10	25	16	2	115	85	68	4	x
KXCC-1PK2			561								632			400									
KXCC-2.6PK1	120	150	583	-	36	275	50	75	120	195	590	45	132	358	10	32	18	2	140	100	78	4	x
KXCC-2.6PK2			483								690			463									
KXCC-6PK1	120	150	481	-	36	275	50	75	120	195	755	45	132	383	10	32	18	2	140	100	78	4	x
KXCC-6PK2			606								880			508									
KXCC-13PK1	140	180	696	-	51	355	70	110	155	255	820	50	146	561	12	50	20	3	165	125	102	4	x
KXCC-13PK2			905								1029			770									
KXCC-25PK1	170	210	1054	368	44	575	92	142	200	340	1188	70	182	833	15	80	22	3	200	160	138	8	x
KXCC-25PK2			1304	618							1438			1083									
KXCC-40PK1	180	220	1237	412	47	700	110	152	225	385	1386	75	200	1006	18	100	24	3	220	180	158	8	x
KXCC-40PK2			1683	858							1832			1452									

| Products | PK-Series | KX-PK-CF / KXCC-PK-CF |

Products : KX-PK-CF | KXCC-PK-CF

Capacity : 200 M³/ Hr
 Head : 48 bar
 Temperature : 200° C
 Viscosity : 1,00,000 Cst

KX-CF | KXCC-CF Pumps are of cast iron construction with various metallurgy of rotating parts like Alloy steel, Tool Steel, SS 304, SS 316. Shaft Sealing ensured by soft gland packing / Mechanical seal. Torsion free metal bonded stator and double sealed universal joints as pin & bush joints or Special Designed like Gear Joints or Cardon joints as per customer requirements for longer service life and improved efficiency resulted in trouble free performance of these pumps.



Dimensions

KX-PK-CF

KXCC-PK-CF

Performance Curve

Single Stage

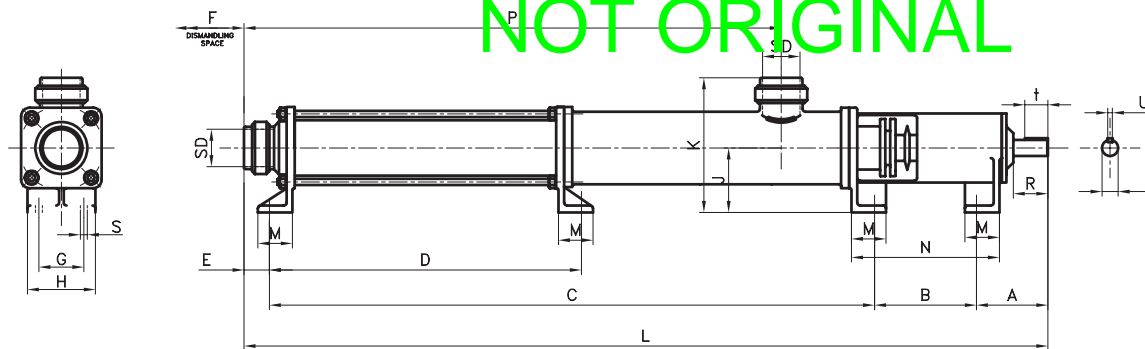
Double Stage

Four Stage

These Series pumps find application in :

- | | | | | |
|----------------------|--------------------------|---------------------|------------------------|-----------------------|
| - Rice Bran Oil | - lime Slurry | - Coating Mix | - Chemicals | - Effluent |
| - Acids | - Sugar Juice | - Oil Slurry | - Emulsion | - Edible Oil |
| - Instant Tea | - Carbonate beverage | - Yeast | - Precipitated Calcium | - Fertilizer |
| - Soap Solution | - lube Oil | - Domestic Effluent | - Construction | - Marine |
| - Acrylic Emulsion | - Tribasic lead Sulphate | - Paint | - Effluent Carbonate | - Mining |
| - Floral Concentrate | - Chemical Slurry | - Brewery | - Cosmetics | - Pharmaceutical |
| - Sizing Paste | - Magma | - Detergent Slurry | - Explosive Slurry | - Paper |
| - Alkaline Slurry | - Vegetable Oil | - Paper Pulp | - Resin | - Paints |
| - latex | - Ceramic Slurry | - Ceramics | - Detergents | - Sewage Treatment |
| - Sodium silicate | - Molasses | - Dyestuff | - Distillery | - Soap |
| - Al. Hydroxide Gel | - Viscose | - Printing color | - Dyestuff | - Sugar & Textile etc |

DIMENSION



TYPE & SIZE OF PUMP	BASIC DIMENSIONS															OPENING		SHAFT EXTENSIONS			
	A	B	C	D	E	F	G	H	J	K	L	M	N	P	S	SD(SMS or IDF)	d	R	†	U	
KXF-031-1A	106	177	610	-	51	355	70	110	100	200	944	50	237	514	12	2"	22	50	40	6	
KXF-031-2A			752								1086			656							
KXF-038-1A	125	177	790	-	44	450	78	118	112	252	1136	60	257	672	12	2-1/2"	28	60	40	8	
KXF-038-2A			995								1341			877							
KXF-039-1A	125	177	814	-	44	450	78	118	112	252	1160	60	257	696	12	2-1/2"	28	60	40	8	
KXF-039-2A			1030								1377			912							
KXF-045-1A	125	177	818	-	44	450	78	118	112	252	1164	60	257	700	12	2-1/2"	28	60	40	8	
KXF-045-2A			1050								1397			932							
KXF-053-1A	157	203	1017	372	44	575	92	142	132	272	1421	70	293	837	15	3"	32	80	60	10	
KXF-053-2A			1302	657							1122										
KXF-053-4A			1924	1143							2367			1737							
KXF-065-1A			1259	478							1702			1072							
KXF-065-2A	166	228	1619	838	49	700	110	152	160	320	2162	75	328	1432	18	4"	38	80	60	10	
KXF-063-1A			1206	424							1018										
KXF-063-2A			1538	757							1981			1351							
KXF-076-1A	200	270	1511	484	64	925	130	175	160	345	2045	75	370	1245	18	5"	48	110	80	14	
KXF-076-2A			1881	854							1615										
KXF-090-1A			1932	649							2578			1578							
KXF-090-2A			2382	1059							3028			2028							
KXF-099-1A	253	342	2015	734	51	1200	172	232	200	440	2661	100	482	1661	22	6"	60	140	100	18	
KXF-099-2A			2575	1294							2221										

SINGLE STAGE

DOUBLE STAGE

FOUR STAGE

• Back to Product

• KX - PK - CD / KXCC - PK - CD

• KX - PK - CF / KXCC - PK - CF

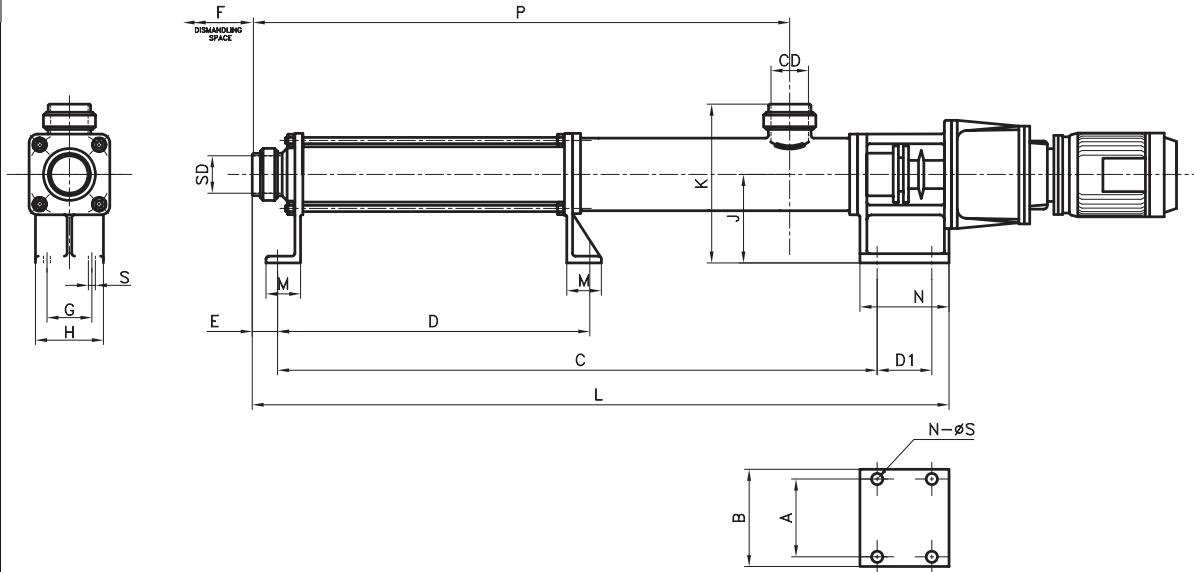
• KX - PK - SF / KXCC - PK - SF

• KXW - PK - MS / KXWCC PK - MS

• KXW - PK - SF / KXWCC - PK - SF

DIMENSION

NOT ORIGINAL



SINGLE STAGE

DOUBLE STAGE

FOUR STAGE

- Back to Product
- KX - PK - CD / KXCC - PK - CD
- KX - PK - CF / KXCC - PK - CF
- KX - PK - SF / KXCC - PK - SF
- KXW - PK - MS / KXWCC PK - MS
- KXW - PK - SF / KXWCC - PK - SF

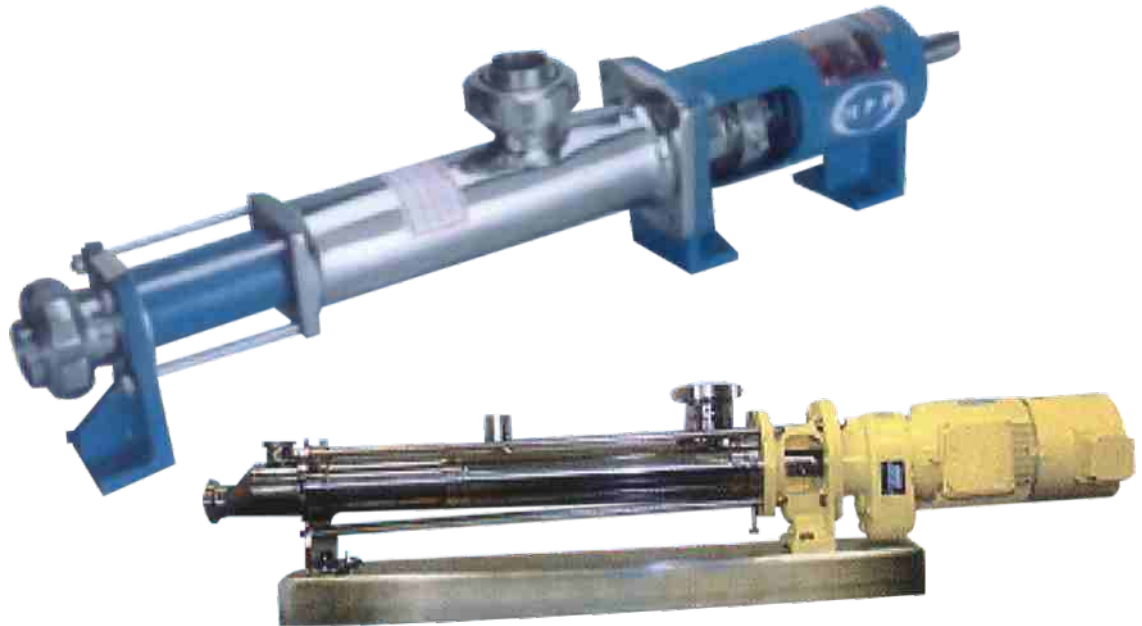
TYPE & SIZE OF PUMP	BASIC DIMENSIONS															OPENINGS		
	A	B	C	D	D1	E	F	G	H	J	K	L	M	N	P	N-øS	SD(SMS or IDF)	
KXCC-031-1A	140	160	649	-	-	51	355	70	110	155	255	773	50	146	514	2-12	2"	
KXCC-031-2A			791	-	-	-	-	-	-	-	-	-			915			656
KXCC-038-1A	160	200	875	-	-	44	450	78	118	160	300	946	60	162	672	2-12	2-1/2"	
KXCC-038-2A			1080	485	-	-	-	-	-	-	-	-			1151			877
KXCC-039-1A	160	200	845	-	-	44	450	78	118	160	300	970	60	162	696	2-12	2-1/2"	
KXCC-039-2A			1061	520	-	-	-	-	-	-	-	-			1411			912
KXCC-045-1A	160	200	855	-	-	44	450	78	118	160	300	981	60	162	700	2-12	2-2/2"	
KXCC-045-2A			1050	540	-	-	-	-	-	-	-	-			1212			932
KXCC-053-1A	170	210	1058	372	-	44	575	92	142	200	340	1192	70	180	837	2-15	3"	
KXCC-053-2A			1343	657	-	-	-	-	-	-	-	-			1477			1122
KXCC-065-1A	180	220	1352	478	-	49	700	110	152	225	385	1452	75	200	1072	4-18	4"	
KXCC-065-2A			1712	838	100	49	700	110	152	225	385	1812			1432			
KXCC-063-2A			1206	424	-	-	-	-	-	-	-	-			1398			1018
KXCC-063-2A			1538	757	-	-	-	-	-	-	-	-			1731			1351
KXCC-076-1A	170	220	1620	484	-	64	925	130	175	225	410	1729	75	200	1245	2-18	5"	
KXCC-076-2A			1990	854	-	-	-	-	-	-	-	-			2099			1615



Products : KX-PK-SF | KXCC-PK-SF

Capacity : 200 M³/ Hr
 Head : 48 bar
 Temperature : 150° C
 Viscosity : 1,00,000 Cst

KX-SF | KXCC-SF series hygiene designed pumps with all the wattle metallic parts in contact with liquid is smooth and polished stainless steel. Stator is made of food grade, non contaminating elastomer. Sealing is ensured by suitable food grade gland packing / mechanical Seal. End connections available are IDF, SMS, Triclover or Equivalent Stands.



Dimensions

KX-PK-SF

KXCC-PK-SF

Performance Curve

Single Stage

Double Stage

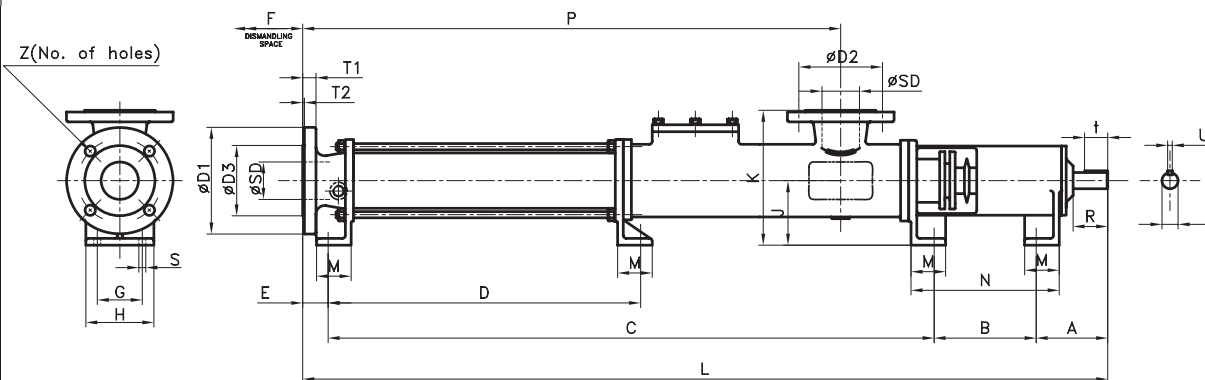
Four Stage

These Series pumps find application in :

- Confectionary
- Brewery
- Cosmetics
- Fruit Juice
- Detergents
- Fruit Pulp
- Dairy
- Glucose
- Distillery
- Ice Cream Mix
- Food Processing
- Jam
- Fruit Processing
- latex
- Ice Cream
- liquor
- Matt and Cocoa
- lotions and Creams
- Pharmaceutical
- Matt Extract
- Winery
- Medical Formulation
- Beverages
- Milk
- Squashes
- Cream
- Sugar Syrup
- Curd
- Tamarind Extract
- Dematerialized Water
- Tooth Paste
- Yoghurt etc ..
- Tomato Paste
- Yeast
- Apple Pulp
- Bee,
- Beverages
- Biscuits Dough
- Butter Oil

DIMENSION

NOT ORIGINAL



TYPE & SIZE OF PUMP	BASIC DIMENSIONS														FLANGE DIMENSIONS						SHAFT ESTENSIONS					
	A	B	C	D	E	F	G	H	J	K	L	M	N	P	S	SD	T1	T2	D1	D2	D3	Z	d	R	t	U
KX-0.4PK1	105	133	400	-	36	275	50	75	90	165	668	45	193	296	10	25	16	2	115	85	68	4	22	50	40	6
KX-0.4PK2			450								718			346								$\phi 14$				
KX-1PK1	105	133	424	-	36	275	50	75	90	165	692	45	193	320	10	25	16	2	115	85	68	4	22	50	40	6
KX-1PK2			504								772			400								$\phi 14$				
KX-2.6PK1	105	133	456	-	36	275	50	75	90	165	730	45	193	358	10	32	18	2	140	100	78	4	22	50	40	6
KX-2.6PK2			666								830			463								$\phi 18$				
KX-6PK1	105	133	481	-	36	275	50	75	90	165	755	45	193	383	10	32	18	2	140	100	78	4	22	50	40	6
KX-6PK2			606								880			508								$\phi 18$				
KX-13PK1	106	177	481	-	51	355	70	110	100	200	991	50	237	561	12	50	20	3	165	125	102	4	22	50	40	6
KX-13PK2			606								1200			770								$\phi 18$				
KX-13PK4	125	177	1357	847	44	450	78	118	112	252	1703	60	257	1239	12	65	20	3	185	145	122	4	28	60	40	8
KX-25PK1	157	203	1013	368	44	575	92	142	132	272	1417	70	293	833	15	80	22	3	200	160	138	8	32	80	60	10
KX-25PK2			1263	618							1667			1083								$\phi 18$				
KX-40PK1	166	228	1193	412	47	700	110	152	160	320	1636	75	328	1006	18	100	24	3	220	180	158	8	38	80	60	10
KX-40PK2			1639	858							3672			1452								$\phi 18$				
KX-40PK4			2337	1310							2871			2071												
KX-62PK1	200	270	1601	574	64	925	130	175	160	345	2135	75	370	1335	18	125	26	3	250	210	188	8	48	110	80	14
KX-62PK2			1960	933							2494			1694								$\phi 18$				
KX-90PK-1L			1819	792							2353			1553												
KX-100PK1	253	342	2060	1294	51	1200	172	232	200	440	2706	100	482	1706	22	150	26	3	285	240	212	8	60	140	100	18
KX-100PK2			2640	1359							3286			2286								$\phi 22$				

SINGLE STAGE

DOUBLE STAGE

FOUR STAGE

• Back to Product

• KX - PK - CD / KXCC - PK - CD

• KX - PK - CF / KXCC - PK - CF

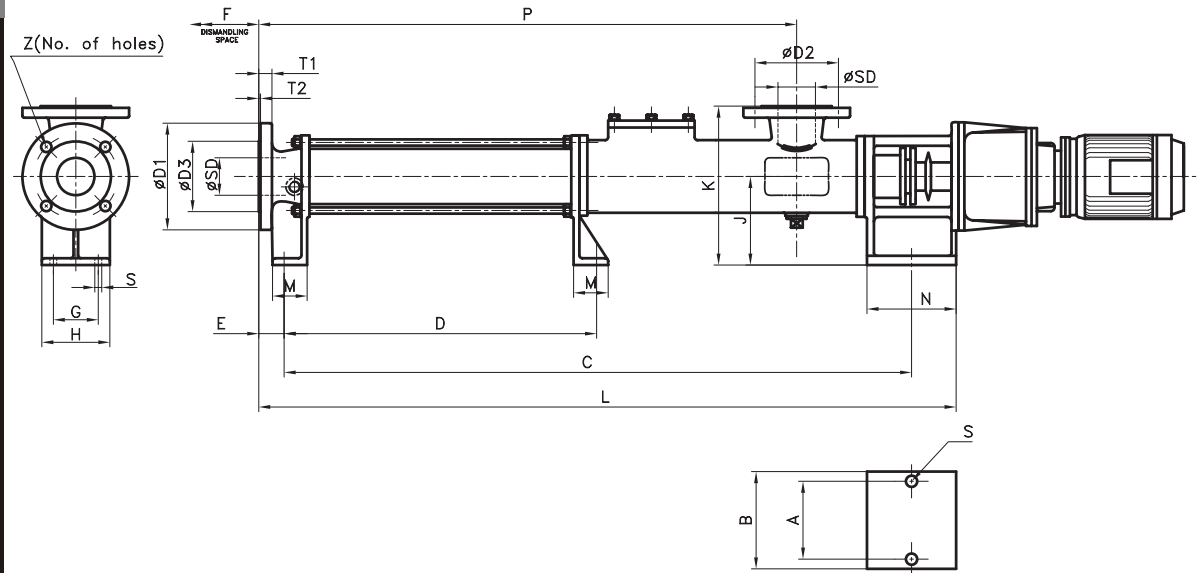
• KX - PK - SF / KXCC - PK - SF

• KXW - PK - MS / KXWCC PK - MS

• KXW - PK - SF / KXWCC - PK - SF

DIMENSION

NOT ORIGINAL



- Back to Product
- KX - PK -CD / KXCC - PK - CD
- KX - PK - CF / KXCC - PK - CF
- KX - PK - SF / KXCC - PK - SF
- KXW - PK - MS / KXWCC PK - MS
- KXW - PK - SF / KXWCC - PK - SF

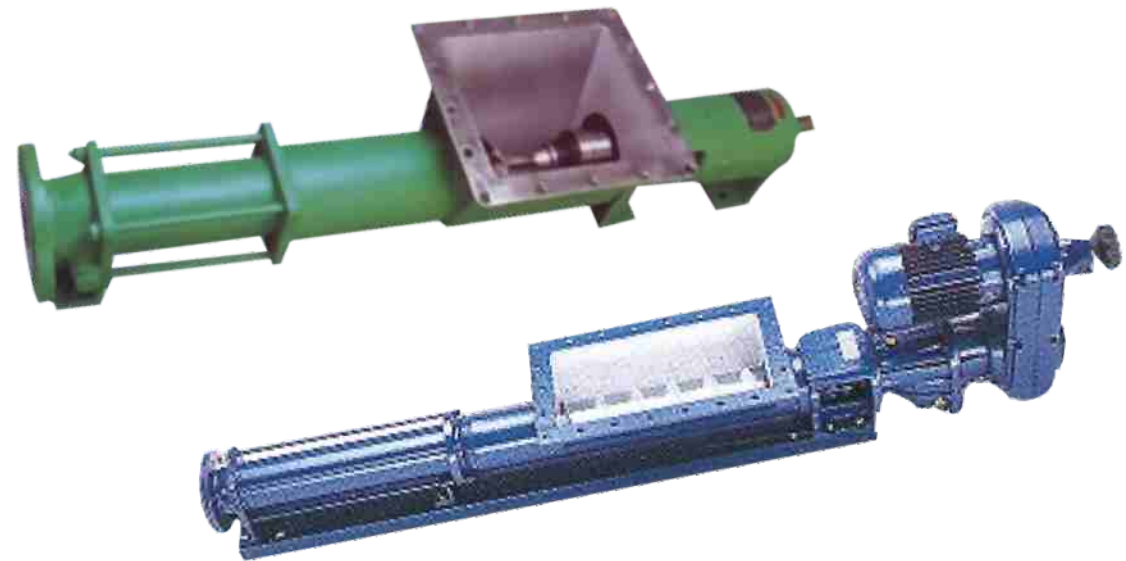
TYPE & SIZE OF PUMP	BASIC DIMENSIONS														FLANGE DIMENSIONS									
	A	B	C	D	E	F	G	H	J	K	L	M	N	P	S	SD	T1	T2	D1	D2	D3	Z		
KXCC-0.4PK1	120	150	417	-	36	275	50	75	120	195	524	45	132	296	10	25	16	2	115	85	68	4	x	ø14
KXCC-0.4PK2			467								574			346										
KXCC-1PK1	120	150	481	-	36	275	50	75	120	195	552	45	132	320	10	25	16	2	115	85	68	4	x	ø14
KXCC-1PK2			561								632			400										
KXCC-2.6PK1	120	150	583	-	36	275	50	75	120	195	590	45	132	358	10	32	18	2	140	100	78	4	x	ø18
KXCC-2.6PK2			483								690			463										
KXCC-6PK1	120	150	481	-	36	275	50	75	120	195	755	45	132	383	10	32	18	2	140	100	78	4	x	ø18
KXCC-6PK2			606								880			508										
KXCC-13PK1	140	180	696	-	51	355	70	110	155	255	820	50	146	561	12	50	20	3	165	125	102	4	x	ø18
KXCC-13PK2			905								1029			770										
KXCC-25PK1	170	210	1054	368	44	575	92	142	200	340	1188	70	182	833	15	80	22	3	200	160	138	8	x	ø18
KXCC-25PK2			1304	618							1438			1083										
KXCC-40PK1	180	220	1237	412	47	700	110	152	225	385	1386	75	200	1006	18	100	24	3	220	180	158	8	x	ø18
KXCC-40PK2			1683	858							1832			1452										

| Products | PK-Series | KXW-PK-MS / KXWCC-PK-MS |

Products : KXW-PK-MS | KXWCC-PK-MS

Capacity : 200 M³/ Hr
 Head : 48 bar
 Temperature : 200° C
 Viscosity : 1,00,000 Cst

These single screw pumps are specially designed for handling high viscose liquids by incorporating a wide mouth hopper and augur cum coupling rod arrangement at suction port. Material of construction for wappable parts is 55 I MS with 55 I Alloy Steel rotating parts depending up on application.



Dimensions

KXW-PK-MS

KXWCC-PK-MS

Performance Curve

Single Stage

Double Stage

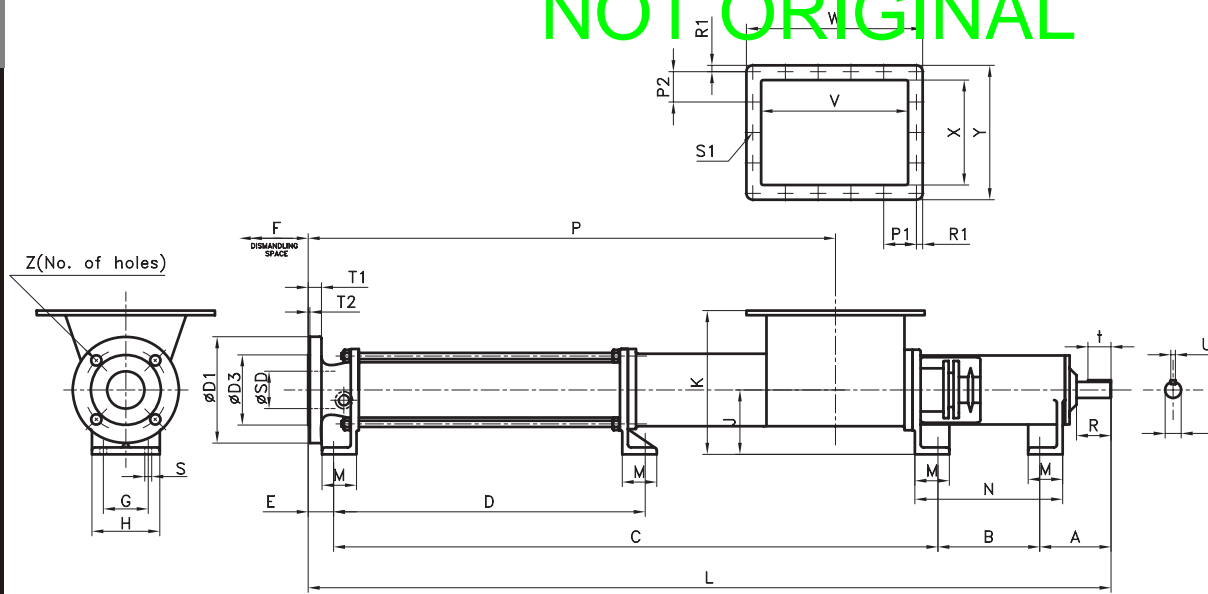
Four Stage

These Series pumps find application in :

- Bakery
- Paper & Pulp
- Brewery
- Paints & varnish
- Confectionary
- Sewage Treatment
- Construction
- Soap & Detergents
- Chemical Ceramic
- Sugar
- Dairy
- Dyestuff Edible Oil
- Jam
- Fruit Processing
- latex
- Ice Cream
- liquor
- Matt and Cocoa
- lotions and Creams
- Pharmaceutical
- Matt Extract
- Winery
- Medical Formulation
- Beverages
- Milk
- Squashes
- Cream
- Sugar Syrup
- Curd
- Tamarind Extract
- Dematerialized Water
- Tooth Paste
- Yoghurt etc ..
- Tomato Paste
- Yeast
- Apple Pulp
- Bee,
- Beverages
- Biscuits Dough
- Butter Oil
- Explosives
- Food Processing
- Starch etc . . .

DIMENSION

NOT ORIGINAL



TYPE & SIZE OF PUMP	BASIC DIMENSIONS													HOPPER DIMENSIONS							FLANGE DIMENSIONS					SHAFT ESTENSIONS									
	A	B	C	D	E	F	G	H	J	K	L	M	N	P	S	S1	V	W	X	Y	P1	P2	R1	SD	T1	T2	D1	D2	D3	Z	d	R	t	U	
KXW-0.4PK1	105	133	400	-	36	275	50	75	90	165	668	45	193	296	10	12 x ø8	140	190	120	170	56.5	50	10	25	16	2	115	85	68	4 x ø14	22	50	40	6	
KXW-0.4PK2			450								718			346																					
KXW-1PK1	105	133	424	-	36	275	50	75	90	165	692	45	193	320	10	12 x ø8	140	190	120	170	56.5	50	10	25	16	2	115	85	68	4 x ø14	22	50	40	6	
KXW-1PK2			504								772			400																					
KXW-2.6PK1	105	133	456	-	36	275	50	75	90	165	730	45	193	358	10	12 x ø8	140	190	120	170	56.5	50	10	32	18	2	140	100	78	4 x ø18	22	50	40	6	
KXW-2.6PK2			666								830			463																					
KXW-6PK1	105	133	481	-	36	275	50	75	90	165	755	45	193	383	10	12 x ø8	140	190	120	170	56.5	50	10	32	18	2	140	100	78	4 x ø18	22	50	40	6	
KXW-6PK2			606								880			508																					
KXW-13PK1	106	177	481	-	51	355	70	110	100	200	991	50	237	561	16	12 x ø10	200	270	180	250	60	55	15	50	20	3	165	125	102	4 x ø18	22	50	40	6	
KXW-13PK2			606								1200			770																					
KXW-13PK4	125	177	1357	847	44	450	78	118	112	252	1703	60	257	1239	12	16 x ø10	240	310	210	280	70	62.5	15	65	20	3	185	145	122	4 x ø18	28	60	40	8	
KXW-25PK1	157	203	1013	368	44	575	92	142	132	272	1417	70	293	833	18	15 x ø12	330	400	240	310	74	70	15	80	22	3	200	160	138	8 x ø18	32	80	60	10	
KXW-25PK2			1263	618							1667			1083																					
KXW-40PK1	166	228	1193	412	47	700	110	152	160	320	1636	75	328	1006	20	18 x ø15	495	575	275	355	90	80	17.5	100	24	3	220	180	158	8 x ø18	38	80	60	10	
KXW-40PK2			1639	858							3672			1452																					
KXW-40PK4			2337	1310							2871			2071																					
KXW-62PK1	200	270	1601	574	64	925	130	175	160	345	2135	75	370	1335	20	18 x ø15	495	575	275	355	90	80	17.5	125	26	3	250	210	188	8 x ø18	48	110	80	14	
KXW-62PK2			1960	933							2494			1694																					
KXW-90PK-1L			1819	792							2353			1553																					
KXW-100PK1	253	342	2060	1294	51	1200	172	232	200	440	2706	100	482	1706	22	24 x ø18	730	810	370	450	110	82	20	150	26	3	285	240	212	8 x ø22	60	140	100	18	
KXW-100PK2			2640	1359							3286			2286																					

SINGLE STAGE

DOUBLE STAGE

FOUR STAGE

• Back to Product

• KX - PK - CD / KXCC - PK - CD

• KX - PK - CF / KXCC - PK - CF

• KX - PK - SF / KXCC - PK - SF

• KXW - PK - MS / KXWCC PK - MS

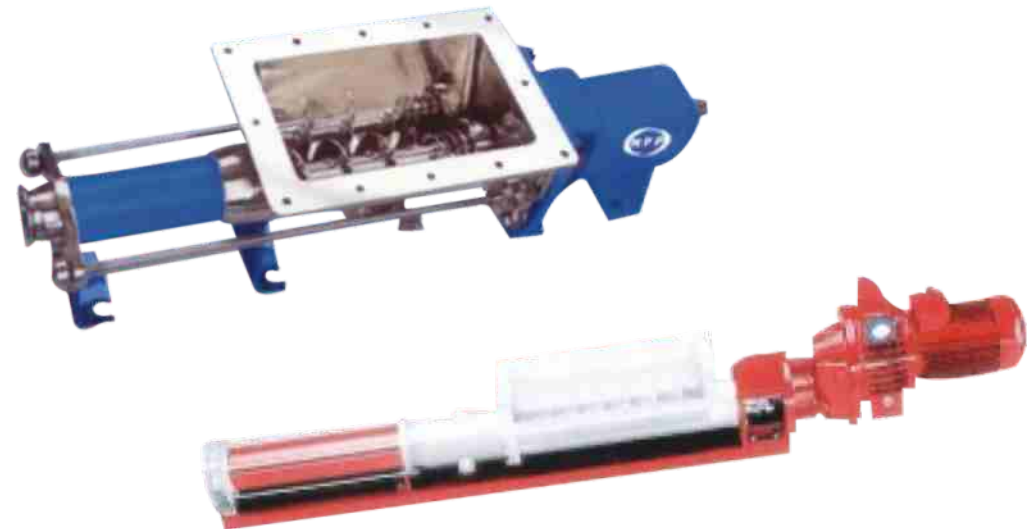
• KXW - PK - SF / KXWCC - PK - SF

| Products | PK-Series | KXW-PK-SF / KXWCC-PK-SF |

Products : KXW-PK-SF | KXWCC-PK-SF

Capacity : 200 M³/ Hr
 Head : 48 bar
 Temperature : 200° C
 Viscosity : 1,00,000 Cst

These single screw pumps are specially designed for handling high viscose liquids by incorporating a wide mouth hopper and augur cum coupling rod arrangement at suction port. Material of construction for wappable parts is SS / MS with SS / Alloy Steel rotating parts depending up on application. Elimination of products retaining pockets ensures freedom from Bacteria / Chemical Contamination.



Dimensions

KXW-PK-SF

KXWCC-PK-SF

Performance Curve

Single Stage

Double Stage

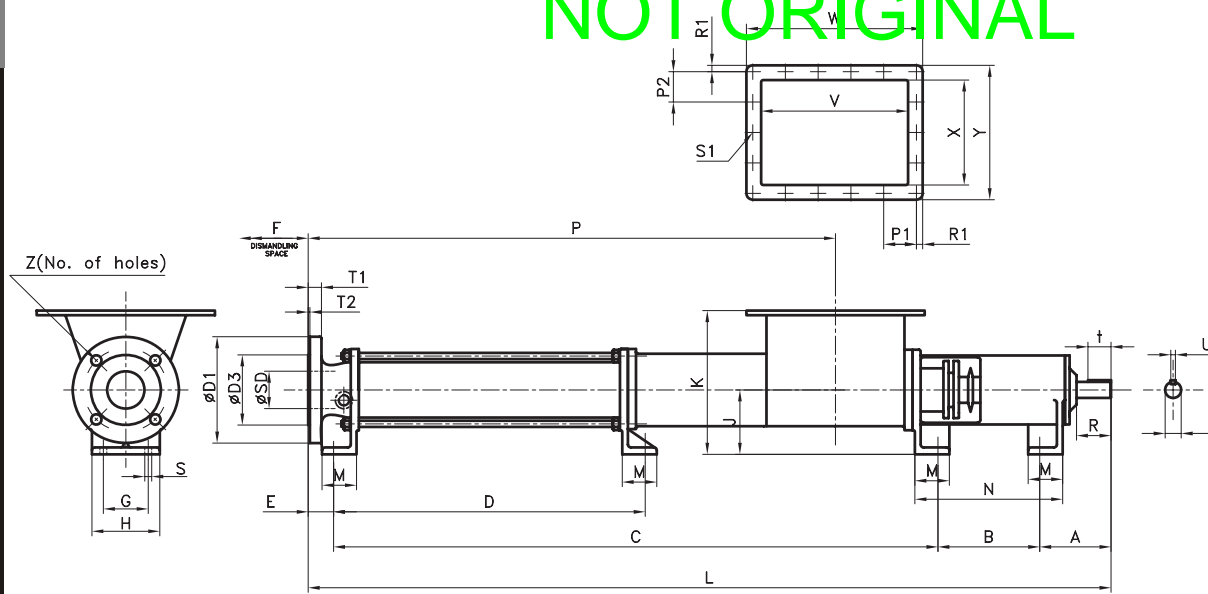
Four Stage

These Series pumps find application in :

- Confectionary
- Brewery
- Cosmetics
- Fruit Juice
- Detergents
- Fruit Pulp
- Dairy
- Glucose
- Distillery
- Ice Cream Mix
- Food Processing
- Jam
- Fruit Processing
- latex
- Ice Cream
- liquor
- Matt and Cocoa
- lotions and Creams
- Pharmaceutical
- Matt Extract
- Winery
- Medical Formulation
- Beverages
- Milk
- Squashes
- Cream
- Sugar Syrup
- Curd
- Tamarind Extract
- Dematerialized Water
- Tooth Paste
- Yoghurt etc ..
- Tomato Paste
- Yeast
- Apple Pulp
- Bee,
- Beverages
- Biscuits Dough
- Butter Oil

DIMENSION

NOT ORIGINAL



TYPE & SIZE OF PUMP	BASIC DIMENSIONS														HOPPER DIMENSIONS								FLANGE DIMENSIONS					SHAFT ESTENSIONS								
	A	B	C	D	E	F	G	H	J	K	L	M	N	P	S	S1	V	W	X	Y	P1	P2	R1	SD	T1	T2	D1	D2	D3	Z	d	R	t	U		
KXW-0.4PK1	105	133	400	-	36	275	50	75	90	165	668	45	193	296	10	12	140	190	120	170	56.5	50	10	25	16	2	115	85	68	4	22	50	40	6		
KXW-0.4PK2			450								718			346		12																				
KXW-1PK1	105	133	424	-	36	275	50	75	90	165	692	45	193	320	10	12	140	190	120	170	56.5	50	10	25	16	2	115	85	68	4	22	50	40	6		
KXW-1PK2			504								772			400		12																				
KXW-2.6PK1	105	133	456	-	36	275	50	75	90	165	730	45	193	358	10	12	140	190	120	170	56.5	50	10	32	18	2	140	100	78	4	22	50	40	6		
KXW-2.6PK2			666								830			463		12																				
KXW-6PK1	105	133	481	-	36	275	50	75	90	165	755	45	193	383	10	12	140	190	120	170	56.5	50	10	32	18	2	140	100	78	4	22	50	40	6		
KXW-6PK2			606								880			508		12																				
KXW-13PK1	106	177	481	-	51	355	70	110	100	200	991	50	237	561	16	12	200	270	180	250	60	55	15	50	20	3	165	125	102	4	22	50	40	6		
KXW-13PK2			606								1200			770		12																				
KXW-13PK4	125	177	1357	847	44	450	78	118	112	252	1703	60	257	1239	12	16	240	310	210	280	70	62.5	15	65	20	3	185	145	122	4	28	60	40	8		
KXW-25PK1	157	203	1013	368	44	575	92	142	132	272	1417	70	293	833	18	15	330	400	240	310	74	70	15	80	22	3	200	160	138	8	32	80	60	10		
KXW-25PK2			1263	618							1667			1083		15																				
KXW-40PK1	166	228	1193	412	47	700	110	152	160	320	1636	75	328	1006	20	18	495	575	275	355	90	80	17.5	100	24	3	220	180	158	8	38	80	60	10		
KXW-40PK2			1639	858							3672			1452		18																				
KXW-40PK4			2337	1310							2871			2071		20																				
KXW-62PK1	200	270	1601	574	64	925	130	175	160	345	2135	75	370	1335	18	18	495	575	275	355	90	80	17.5	125	26	3	250	210	188	8	48	110	80	14		
KXW-62PK2			1960	933							2494			1694		18																				
KXW-90PK-1L			1819	792							2353			1553		20																				
KXW-100PK1	253	342	2060	1294	51	1200	172	232	200	440	2706	100	482	1706	22	24	730	810	370	450	110	82	20	150	26	3	285	240	212	8	60	140	100	18		
KXW-100PK2			2640	1359							3286			2286		22																				

SINGLE STAGE

DOUBLE STAGE

FOUR STAGE

• Back to Product

• KX - PK - CD / KXCC - PK - CD

• KX - PK - CF / KXCC - PK - CF

• KX - PK - SF / KXCC - PK - SF

• KXW - PK - MS / KXWCC PK - MS

• KXW - PK - SF / KXWCC - PK - SF

Performance Curve

SINGLE STAGE

KX - 1 PK 1

KX - 2.6 PK 1

KX - 6 PK 1

KX - 13 PK 1

KX - 25 PK 1

KX - 40 PK 1

KX - 62 PK 1

KX - 100 PK 1



HYDRO PROKAV PUMPS

CHARACTERISTIC CURVE

PUMP SIZE : KX - 1PK1

GRAPH No. : HPP/301/01

TESTED ON
WATER @ 30°C

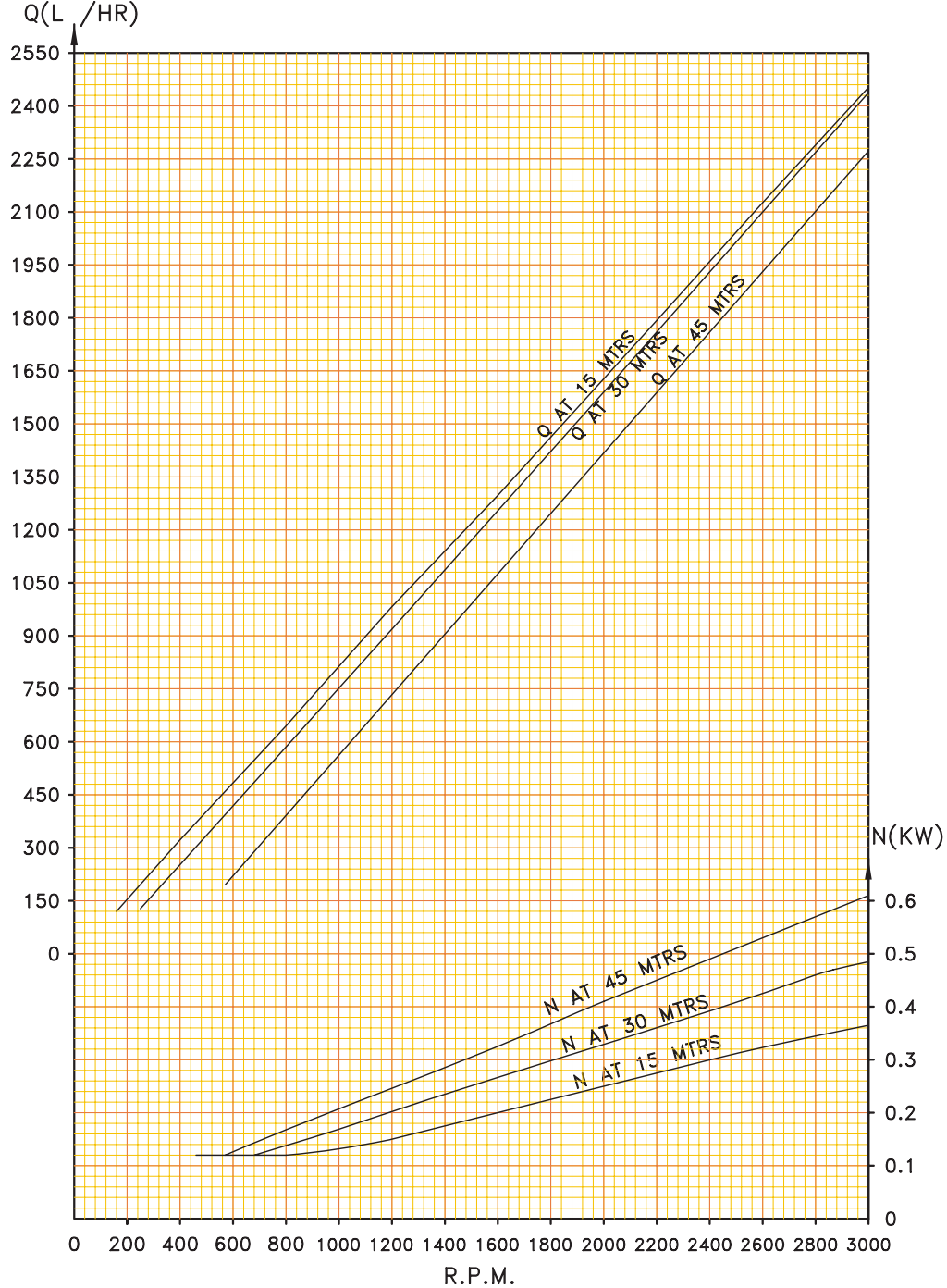
STARTING TORQUE : 2.7 Nm

SHORE HARDNESS = 70° SHORE

SOLID HANDLING CAPACITY

SOFT & COMPRESSABLE UPTO : 12mm

HARD & ANGULAR UPTO : 3mm



Performance Curve

SINGLE STAGE

DOUBLE STAGE

FOUR STAGE

• [Back to Product](#)

• KX - PK - CD / KXCC - PK - CD

• KX - PK - CF / KXCC - PK - CF

• KX - PK - SF / KXCC - PK - SF

• KXW - PK - MS / KXWCC PK - MS

• KXW - PK - SF / KXWCC - PK - SF

Performance Curve

SINGLE STAGE

KX - 1 PK 1

KX - 2.6 PK 1

KX - 6 PK 1


KX - 13 PK 1

KX - 25 PK 1

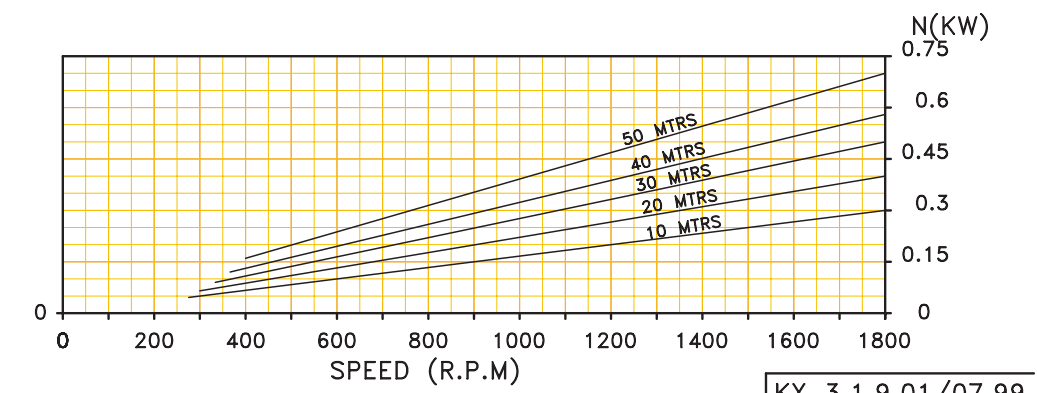
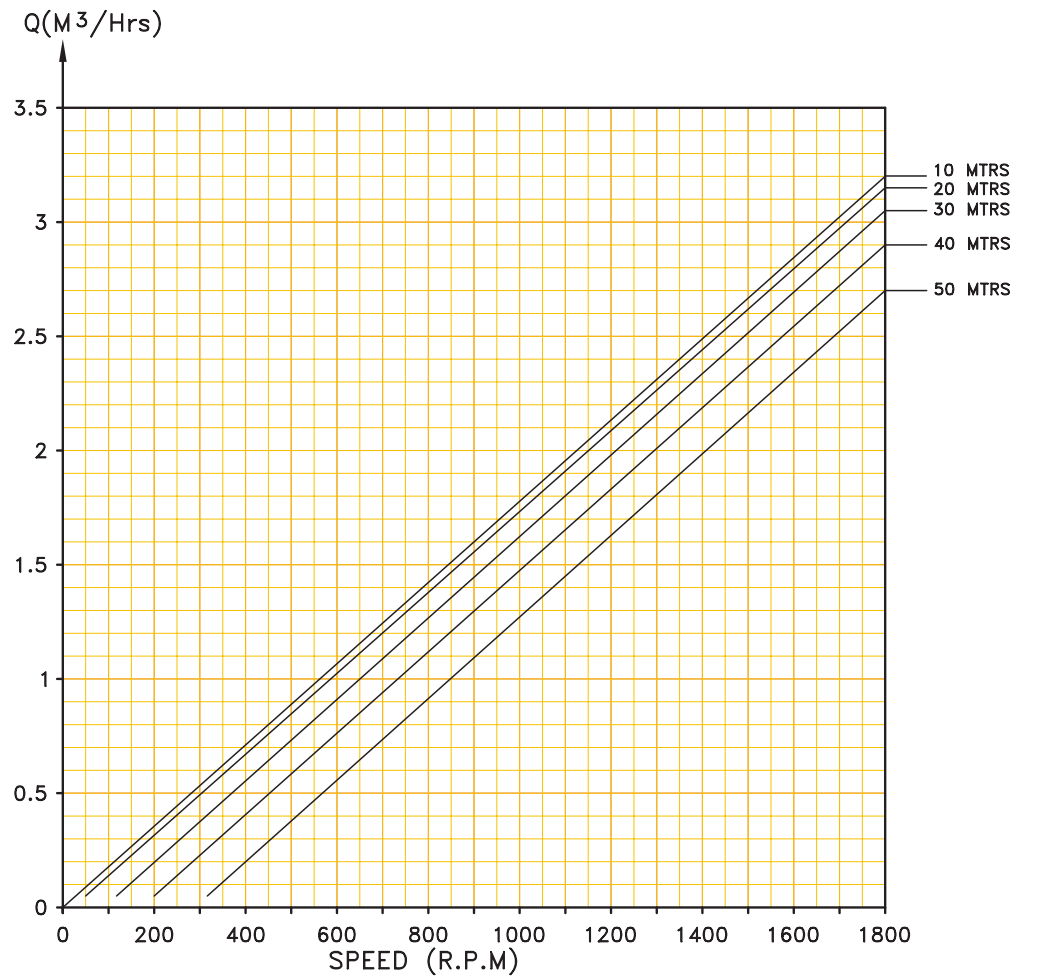
KX - 40 PK 1

KX - 62 PK 1

KX - 100 PK 1

	HYDRO PROKAV PUMPS CHARACTERISTIC CURVE	PUMP SIZE : KXWF- 2.6 PK 1 STABH No. : HPR 314/01
	TESTED ON WATER @ 30°C STARTING TORQUE : 7 Nm STATOR HARDNESS = 70° SHORE	SOLID HANDLING CAPACITY SOFT & COMPRESSABLE UPTO : 16mm HARD & ANGULAR UPTO : 4mm

NOT ORIGINAL



KX 3.1.9.01/07.99

Performance Curve

SINGLE STAGE

DOUBLE STAGE

FOUR STAGE

• [Back to Product](#)

• [KX - PK - CD / KXCC - PK - CD](#)

• [KX - PK - CF / KXCC - PK - CF](#)

• [KX - PK - SF / KXCC - PK - SF](#)

• [KXW - PK - MS / KXWCC PK - MS](#)

• [KXW - PK - SF / KXWCC - PK - SF](#)

Performance Curve

SINGLE STAGE

KX - 1 PK 1

KX - 2.6 PK 1

KX - 6 PK 1


KX - 13 PK 1

KX - 25 PK 1

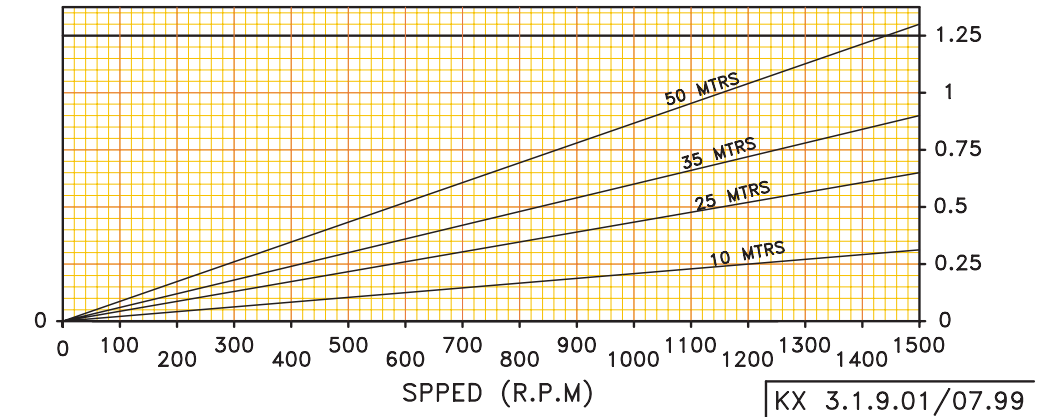
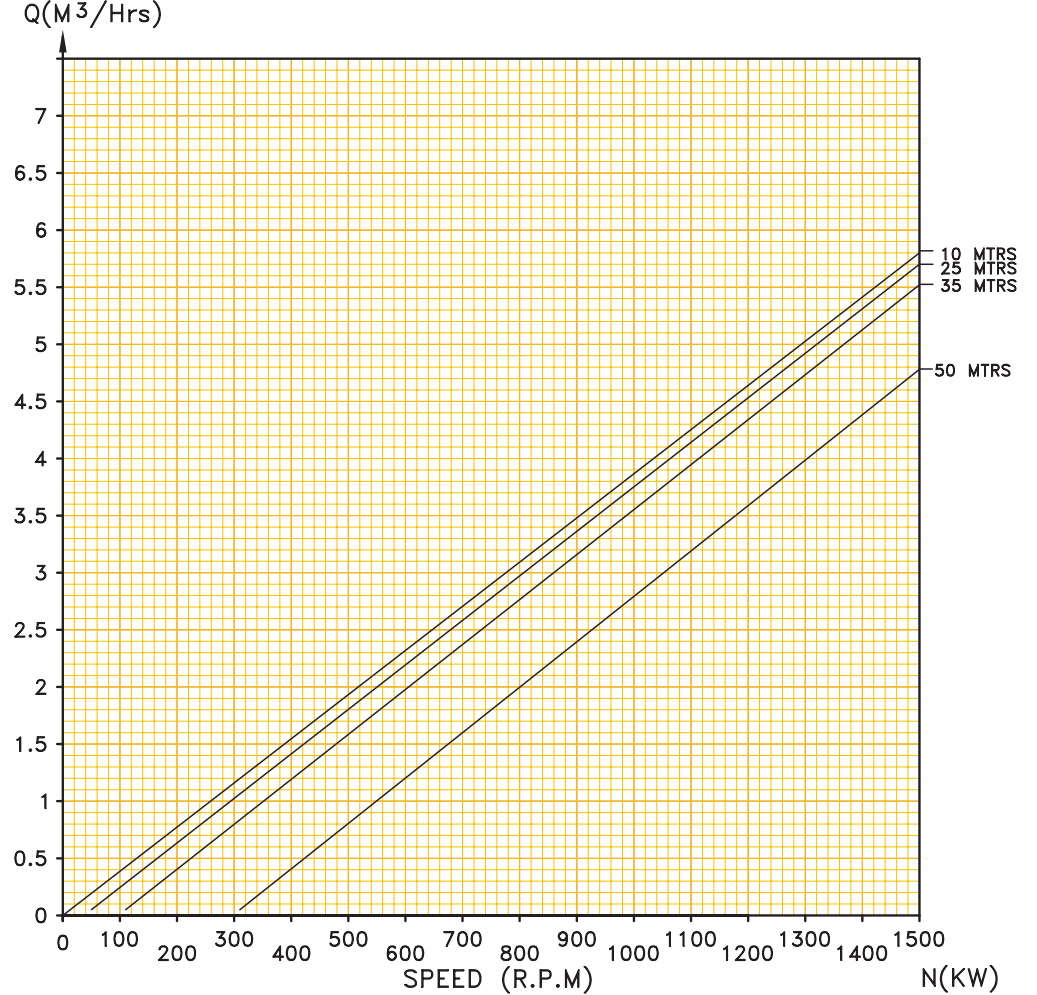
KX - 40 PK 1

KX - 62 PK 1

KX - 100 PK 1

	HYDRO PROKAV PUMPS CHARACTERISTIC CURVE	PUMP SIZE : KX-6 PK1 STABH No. : HPR 312/01
	TESTED ON WATER @ 30°C STARTING TORQUE : 10 Nm SHORE HARDNESS 70° SHORE	SOLID HANDLING CAPACITY SOFT & COMPRESSABLE UPTO : 24mm HARD & ANGULAR UPTO : 6mm

NOT ORIGINAL



KX 3.1.9.01/07.99

Performance Curve

SINGLE STAGE

DOUBLE STAGE

FOUR STAGE

- [Back to Product](#)
- [KX - PK - CD / KXCC - PK - CD](#)
- [KX - PK - CF / KXCC - PK - CF](#)
- [KX - PK - SF / KXCC - PK - SF](#)
- [KXW - PK - MS / KXWCC PK - MS](#)
- [KXW - PK - SF / KXWCC - PK - SF](#)

Performance Curve

SINGLE STAGE

KX - 1 PK 1

KX - 2.6 PK 1

KX - 6 PK 1

KX - 13 PK 1

KX - 25 PK 1

KX - 40 PK 1

KX - 62 PK 1

KX - 100 PK 1



HYDRO PROKAV PUMPS

CHARACTERISTIC CURVE

PUMP SIZE : KX- 13 PK1

STABH No. : HPR 316 / 01

TESTED ON
WATER @ 30°C

STARTING TORQUE : 20 nm

STATOR HARDNESS=70° SHORE

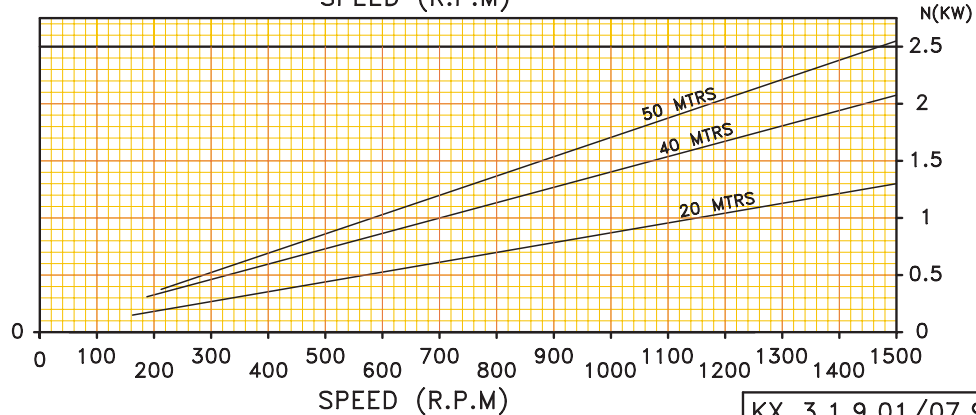
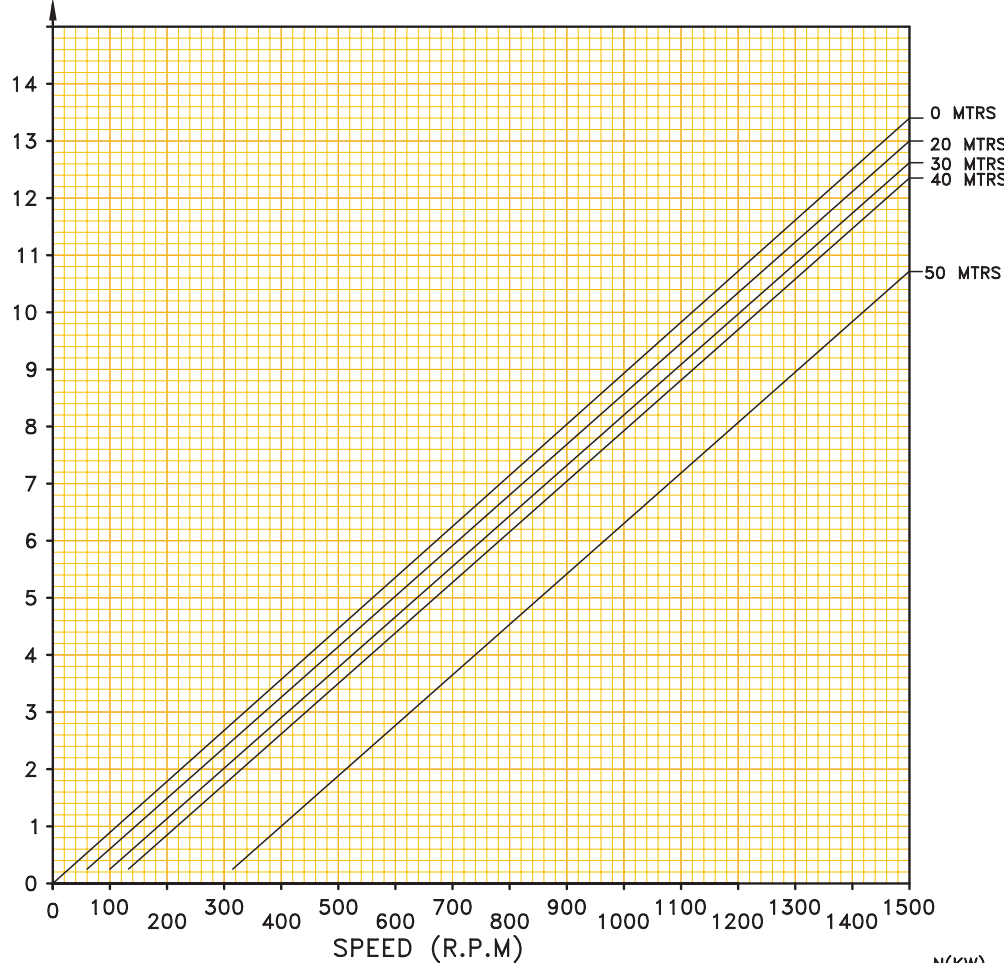
SOLID HANDLING CAPACITY

SOFT & COMPRESSABLE UPTO : 28mm

HARD & ANGULAR UPTO : 7mm

NOT ORIGINAL

Q(M³/Hrs)



KX 3.1.9.01/07.99

Performance Curve

SINGLE STAGE

DOUBLE STAGE

FOUR STAGE

• [Back to Product](#)

• [KX - PK - CD / KXCC - PK - CD](#)

• [KX - PK - CF / KXCC - PK - CF](#)

• [KX - PK - SF / KXCC - PK - SF](#)

• [KXW - PK - MS / KXWCC PK - MS](#)

• [KXW - PK - SF / KXWCC - PK - SF](#)

Performance Curve

SINGLE STAGE

KX - 1 PK 1

KX - 2.6 PK 1

KX - 6 PK 1


KX - 13 PK 1

KX - 25 PK 1

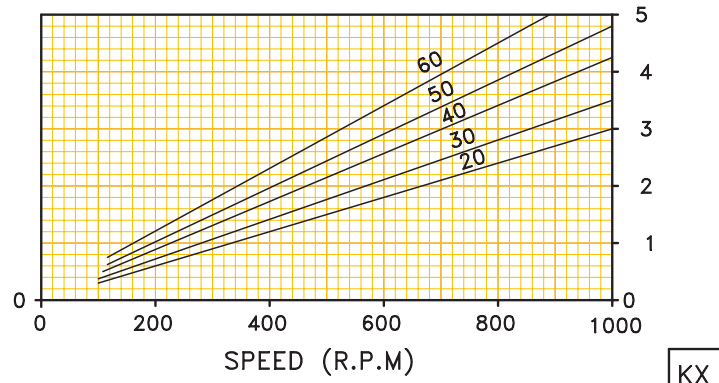
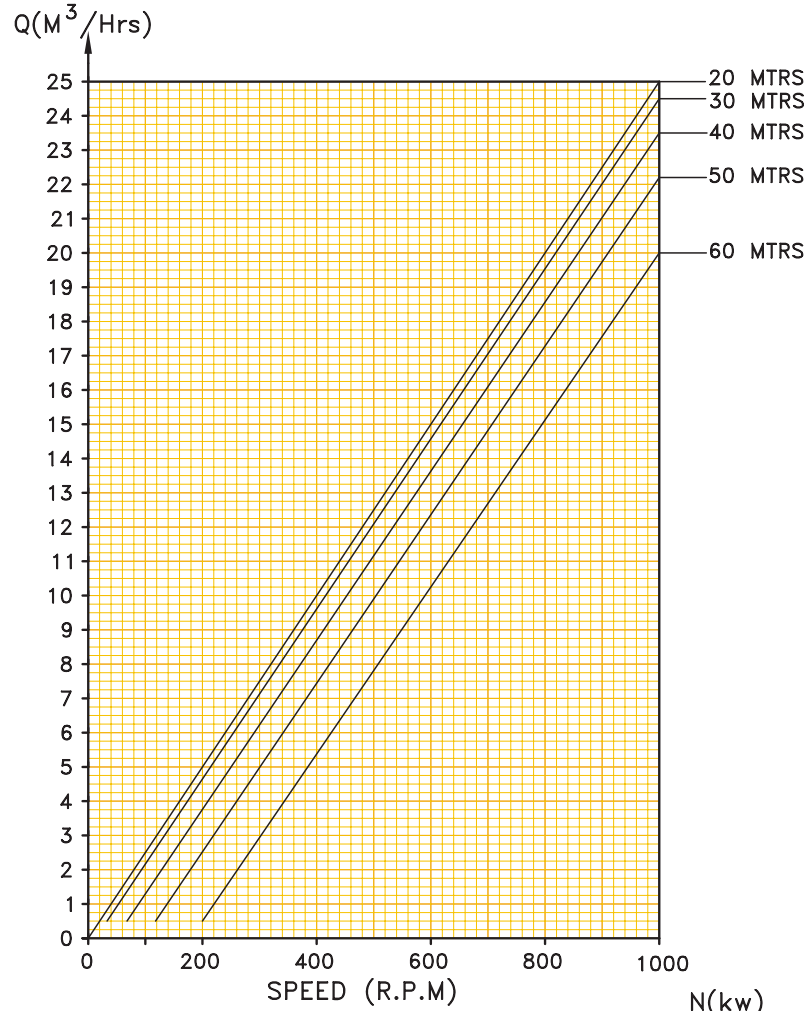
KX - 40 PK 1

KX - 62 PK 1

KX - 100 PK 1

	HYDRO PROKAV PUMPS CHARACTERISTIC CURVE	PUMP SIZE :KX 25 PK 1 STABH No. : HPR 319/01
	TESTED ON WATER @ 30°C STARTING TORQUE : 45 Nm STATOR HARDNESS 70° SHORE	SOLID HANDLING CAPACITY SOFT & COMPRESSABLE UPTO : 40mm HARD & ANGULAR UPTO : 10mm

NOT ORIGINAL



KX 3.1.9.01/07.99

Performance Curve

SINGLE STAGE

DOUBLE STAGE

FOUR STAGE

- [Back to Product](#)
- [KX - PK - CD / KXCC - PK - CD](#)
- [KX - PK - CF / KXCC - PK - CF](#)
- [KX - PK - SF / KXCC - PK - SF](#)
- [KXW - PK - MS / KXWCC PK - MS](#)
- [KXW - PK - SF / KXWCC - PK - SF](#)

Performance Curve

SINGLE STAGE

KX - 1 PK 1

KX - 2.6 PK 1

KX - 6 PK 1

KX - 13 PK 1

KX - 25 PK 1

KX - 40 PK 1

KX - 62 PK 1

KX - 100 PK 1



HYDRO PROKAV PUMPS

PUMP SIZE : KX-40PK1

CHARACTERISTIC CURVE

STABH No. : HPR 213 / 01

TESTED ON
WATER @ 30°C

STARTING TORQUE : 8.38 Kg.M.

SOLID HANDLING CAPACITY

I = 70° SHORE

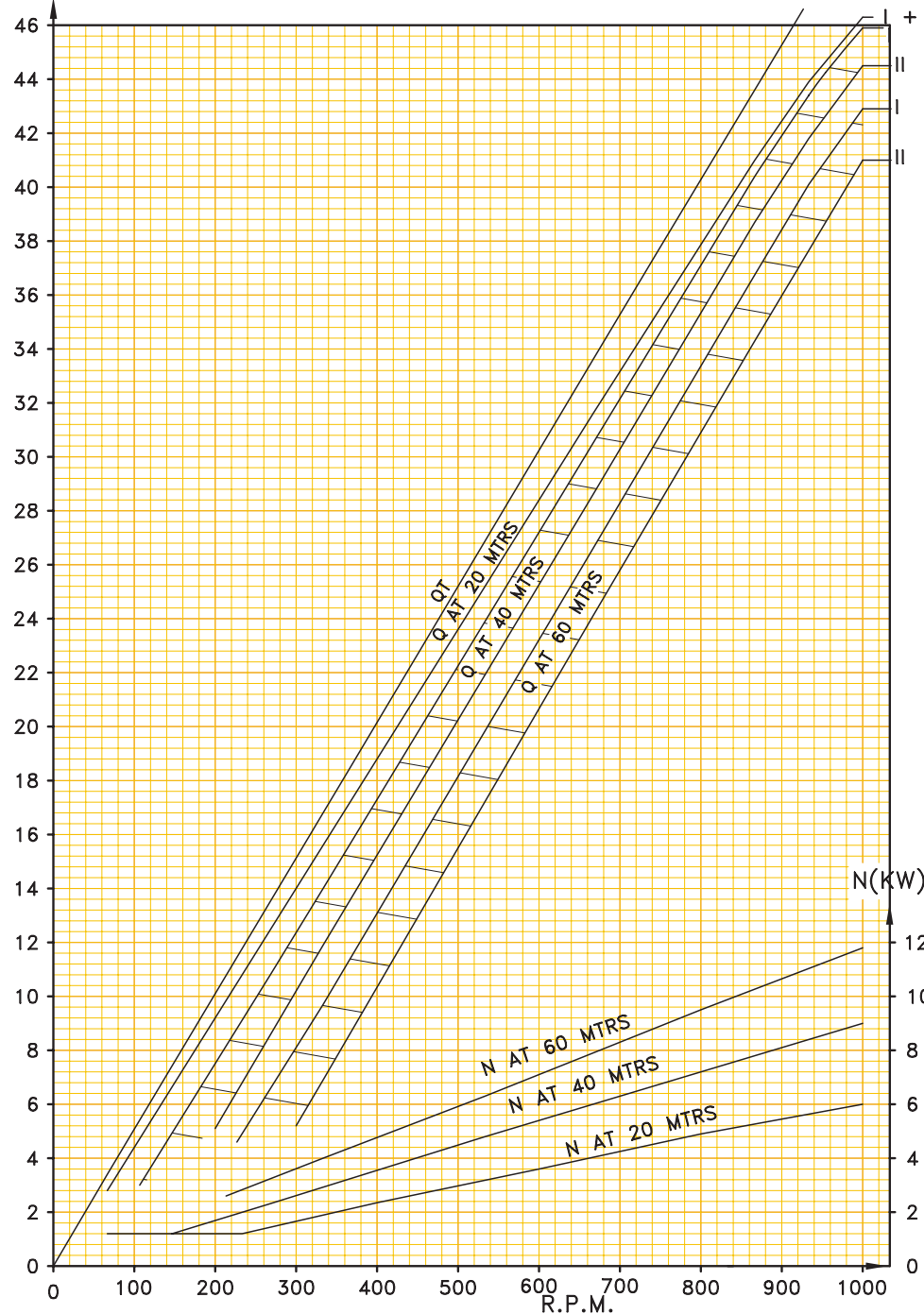
II = 60° SHORE

SOFT & COMPRESSABLE UPTO : 48mm

MIN. REC. MOTOR : 1.5 KW

HARD & ANGULAR UPTO : 12mm

Q(M³/HR)



Performance Curve

SINGLE STAGE

DOUBLE STAGE

FOUR STAGE

• [Back to Product](#)

• [KX - PK - CD / KXCC - PK - CD](#)

• [KX - PK - CF / KXCC - PK - CF](#)

• [KX - PK - SF / KXCC - PK - SF](#)

• [KXW - PK - MS / KXWCC PK - MS](#)

• [KXW - PK - SF / KXWCC - PK - SF](#)

Performance Curve

SINGLE STAGE

KX - 1 PK 1

KX - 2.6 PK 1

KX - 6 PK 1


KX - 13 PK 1

KX - 25 PK 1

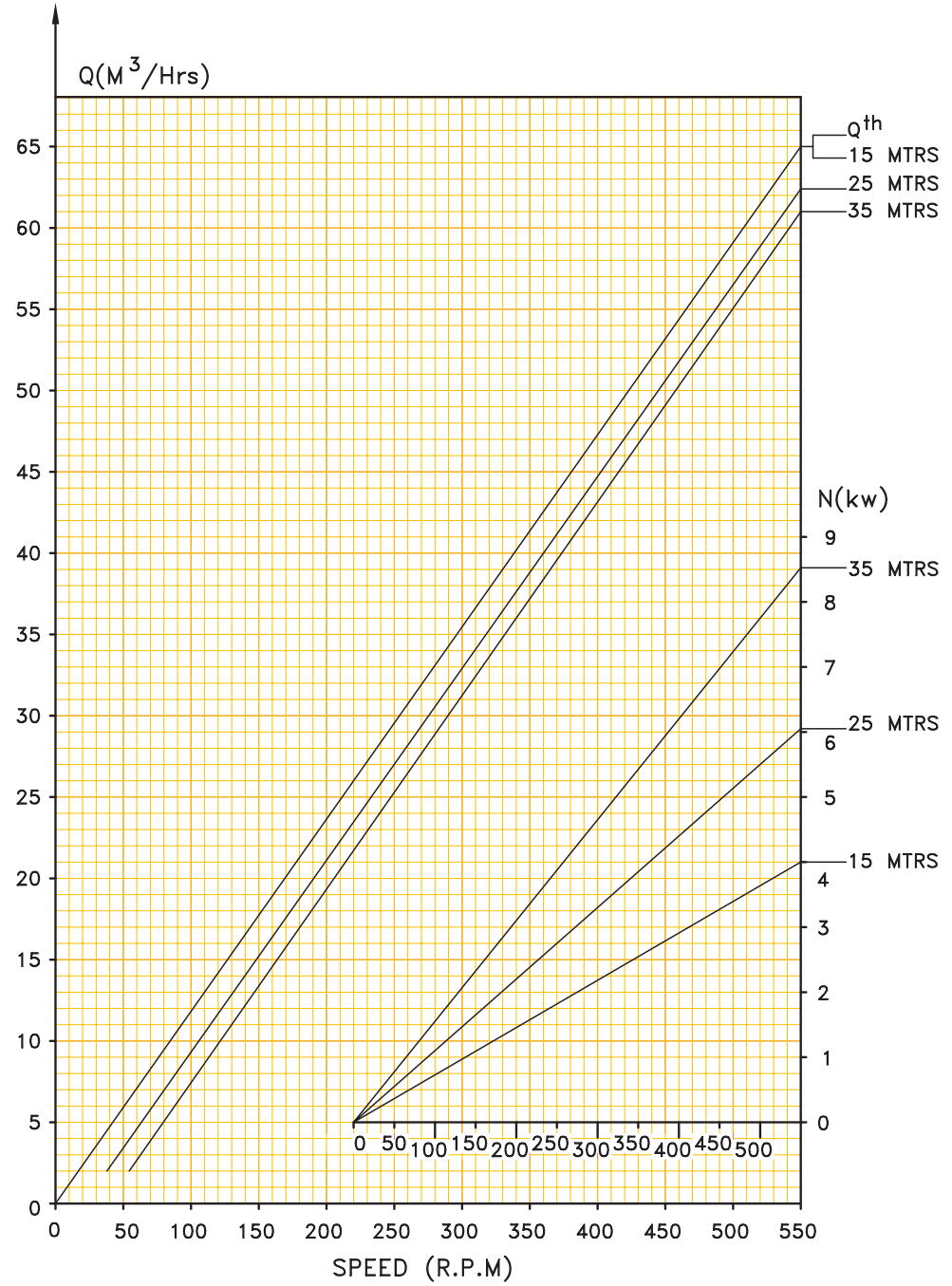
KX - 40 PK 1

KX - 62 PK 1

KX - 100 PK 1

	HYDRO PROKAV PUMPS CHARACTERISTIC CURVE	PUMP SIZE : KX-62PK1 STABH No. : HPR 323/01
	TESTED ON WATER @ 30°C STARTING TORQUE : 175 Nm SHORE HARDNESS 70° SHORE	SOLID HANDLING CAPACITY SOFT & COMPRESSABLE UPTO : 64mm HARD & ANGULAR UPTO : 16mm

NOT ORIGINAL



KX 3.1.9.01/07.99

Performance Curve

SINGLE STAGE

DOUBLE STAGE

FOUR STAGE

• [Back to Product](#)

• [KX - PK - CD / KXCC - PK - CD](#)

• [KX - PK - CF / KXCC - PK - CF](#)

• [KX - PK - SF / KXCC - PK - SF](#)

• [KXW - PK - MS / KXWCC PK - MS](#)

• [KXW - PK - SF / KXWCC - PK - SF](#)

Performance Curve

SINGLE STAGE

KX - 1 PK 1

KX - 2.6 PK 1

KX - 6 PK 1

KX - 13 PK 1

KX - 25 PK 1

KX - 40 PK 1

KX - 62 PK 1

KX - 100 PK 1



HYDRO PROKAV PUMPS

CHARACTERISTIC CURVE

PUMP SIZE : KX-100 PK 1

STABH No. : HPR/325/C1

TESTED ON
WATER @ 30°C

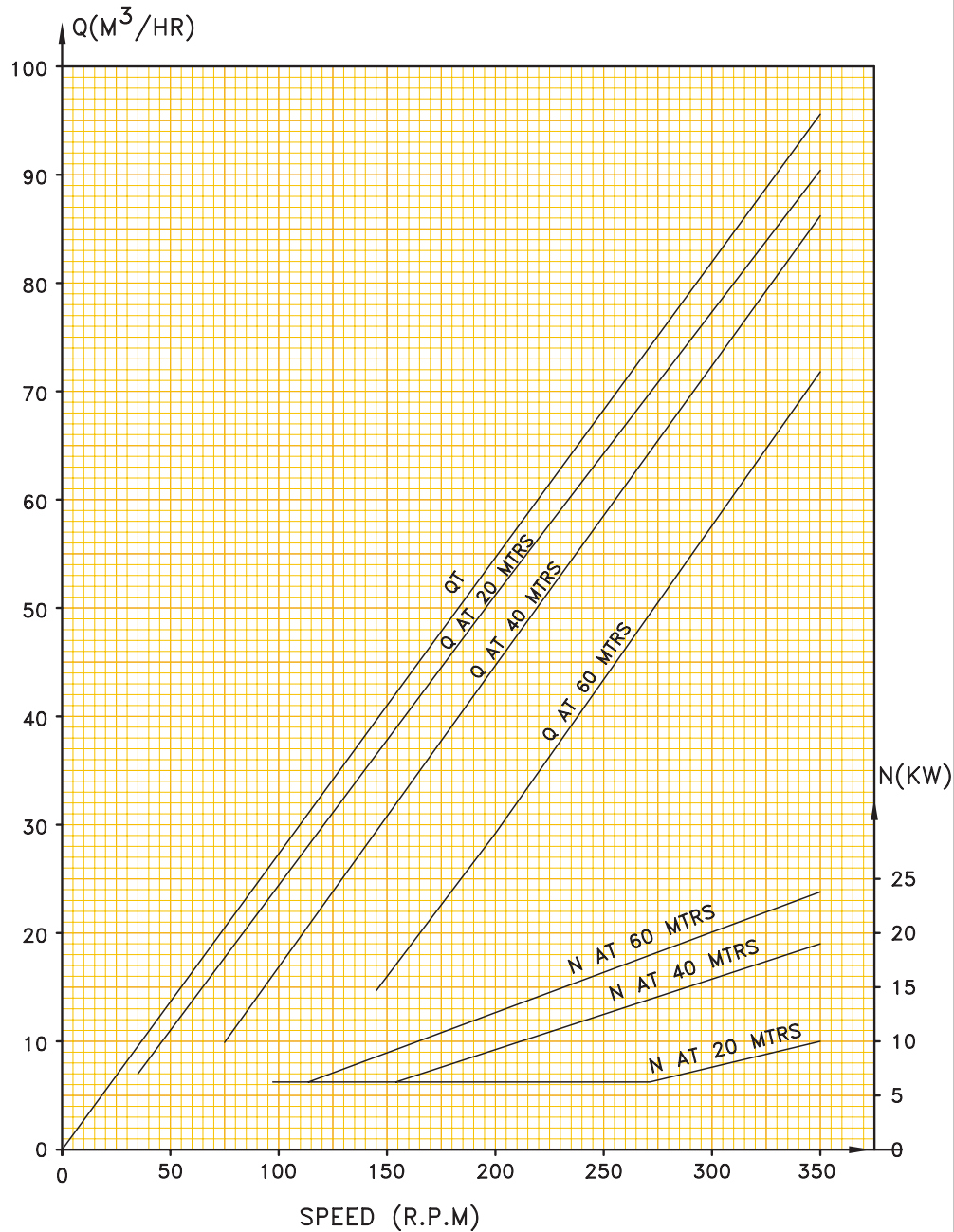
STARTING TORQUE : 350 Nm

STATOR HARDNESS = 70° SHORE

SOLID HANDLING CAPACITY

SOFT & COMPRESSABLE UPTO : 80mm

HARD & ANGULAR UPTO : 20mm



Performance Curve

SINGLE STAGE

DOUBLE STAGE

FOUR STAGE

• [Back to Product](#)

• [KX - PK - CD / KXCC - PK - CD](#)

• [KX - PK - CF / KXCC - PK - CF](#)

• [KX - PK - SF / KXCC - PK - SF](#)

• [KXW - PK - MS / KXWCC PK - MS](#)

• [KXW - PK - SF / KXWCC - PK - SF](#)

Performance Curve

DOUBLE STAGE

KX - 0.4 PK 2

KX - 2.6 PK 2

KX - 6 PK 2

KX - 13 PK 2

KX - 25 PK 2

KX - 40 PK 2

KX - 62 PK 2

KX - 100 PK 2



HYDRO PROKAV PUMPS

PUMP SIZE : KX 0.4PK2

CHARACTERISTIC CURVE

GEAR No. : HEP/33/02

TESTED ON
WATER @ 30°C

STARTING TORQUE :

SOLID HANDLING CAPACITY :

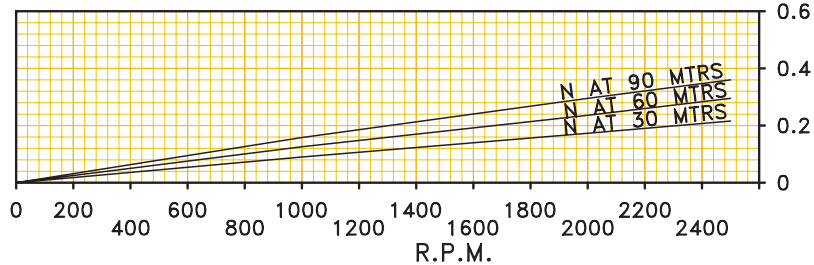
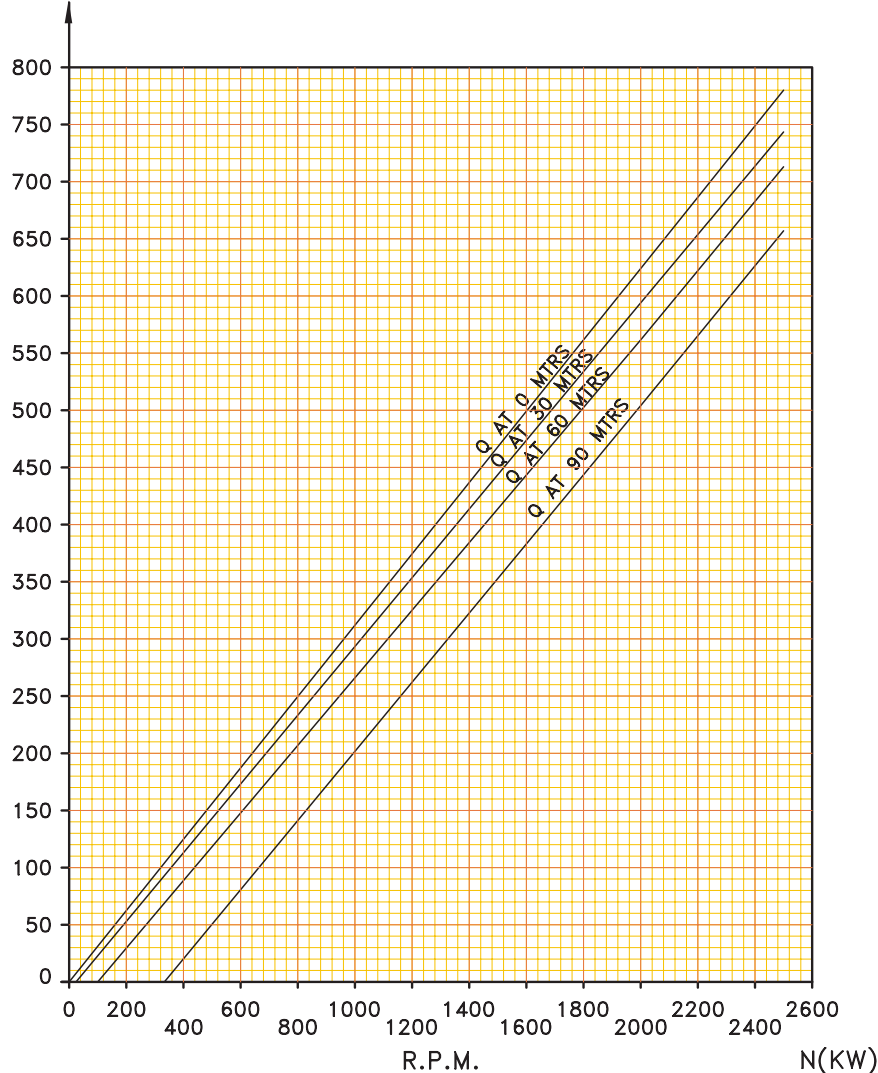
STATOR HARDNESS = 70° SHORE

SOFT & COMPRESSABLE UPTO : 8 mm

MIN. REC. MOTOR :

HARD & ANGULAR UPTO : 2 mm

Q(L /HR)



Performance Curve

SINGLE STAGE

DOUBLE STAGE

FOUR STAGE

• [Back to Product](#)

• [KX - PK - CD / KXCC - PK - CD](#)

• [KX - PK - CF / KXCC - PK - CF](#)

• [KX - PK - SF / KXCC - PK - SF](#)

• [KXW - PK - MS / KXWCC PK - MS](#)

• [KXW - PK - SF / KXWCC - PK - SF](#)

Performance Curve

DOUBLE STAGE

KX - 0.4 PK 2

KX - 2.6 PK 2

KX - 6 PK 2


KX - 13 PK 2

KX - 25 PK 2

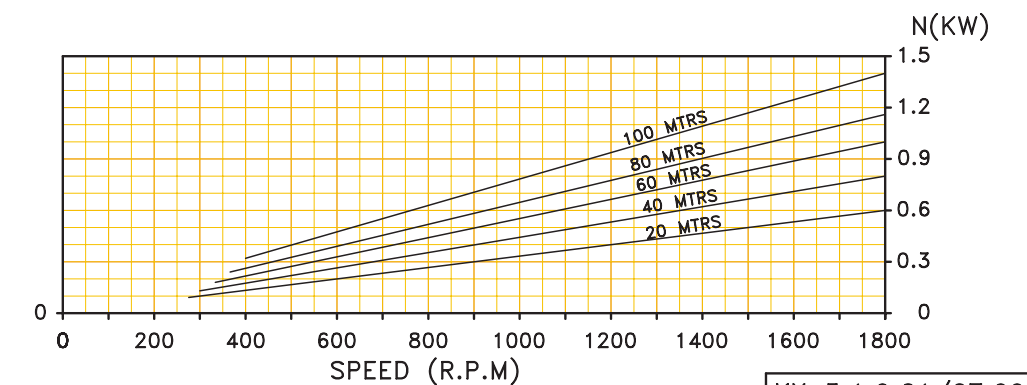
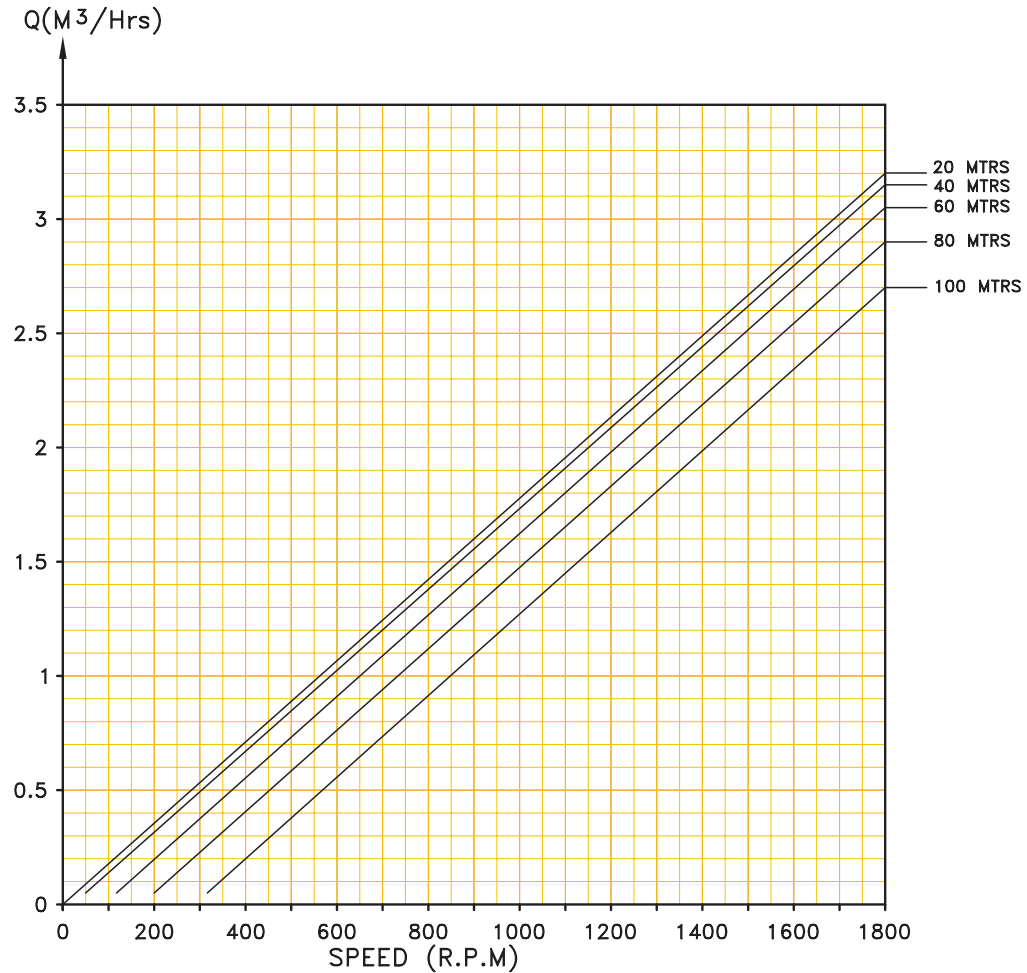
KX - 40 PK 2

KX - 62 PK 2

KX - 100 PK 2

	HYDRO PROKAV PUMPS CHARACTERISTIC CURVE	PUMP SIZE : KX 2.6PK 2 STABH No. : HPR 3.1.9.01/02
	TESTED ON WATER @ 30°C STARTING TORQUE : 15 Nm STATOR HARDNESS = 70° SHORE	SOLID HANDLING CAPACITY SOFT & COMPRESSABLE UPTO : 16mm HARD & ANGULAR UPTO : 4mm

NOT ORIGINAL



KX 3.1.9.01/07.99

Performance Curve

SINGLE STAGE

DOUBLE STAGE

FOUR STAGE

- [Back to Product](#)
- [KX - PK - CD / KXCC - PK - CD](#)
- [KX - PK - CF / KXCC - PK - CF](#)
- [KX - PK - SF / KXCC - PK - SF](#)
- [KXW - PK - MS / KXWCC PK - MS](#)
- [KXW - PK - SF / KXWCC - PK - SF](#)

Performance Curve

DOUBLE STAGE

KX - 0.4 PK 2

KX - 2.6 PK 2

KX - 6 PK 2


KX - 13 PK 2

KX - 25 PK 2

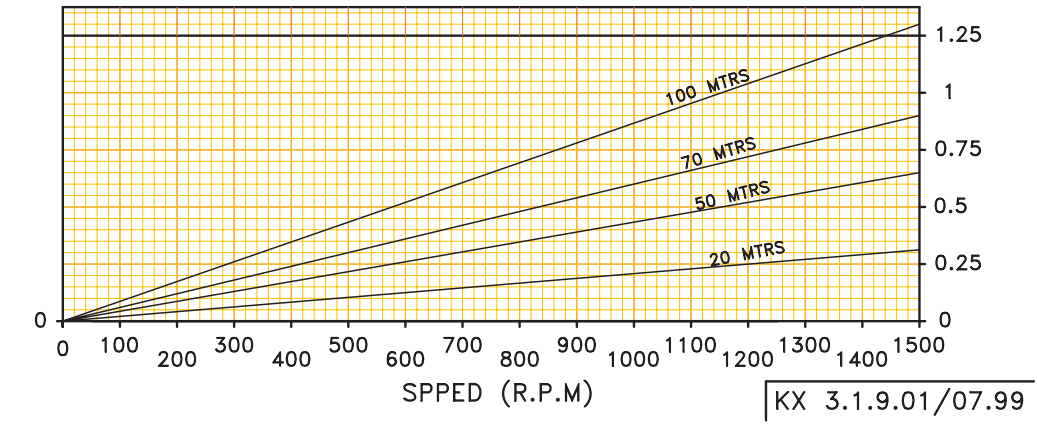
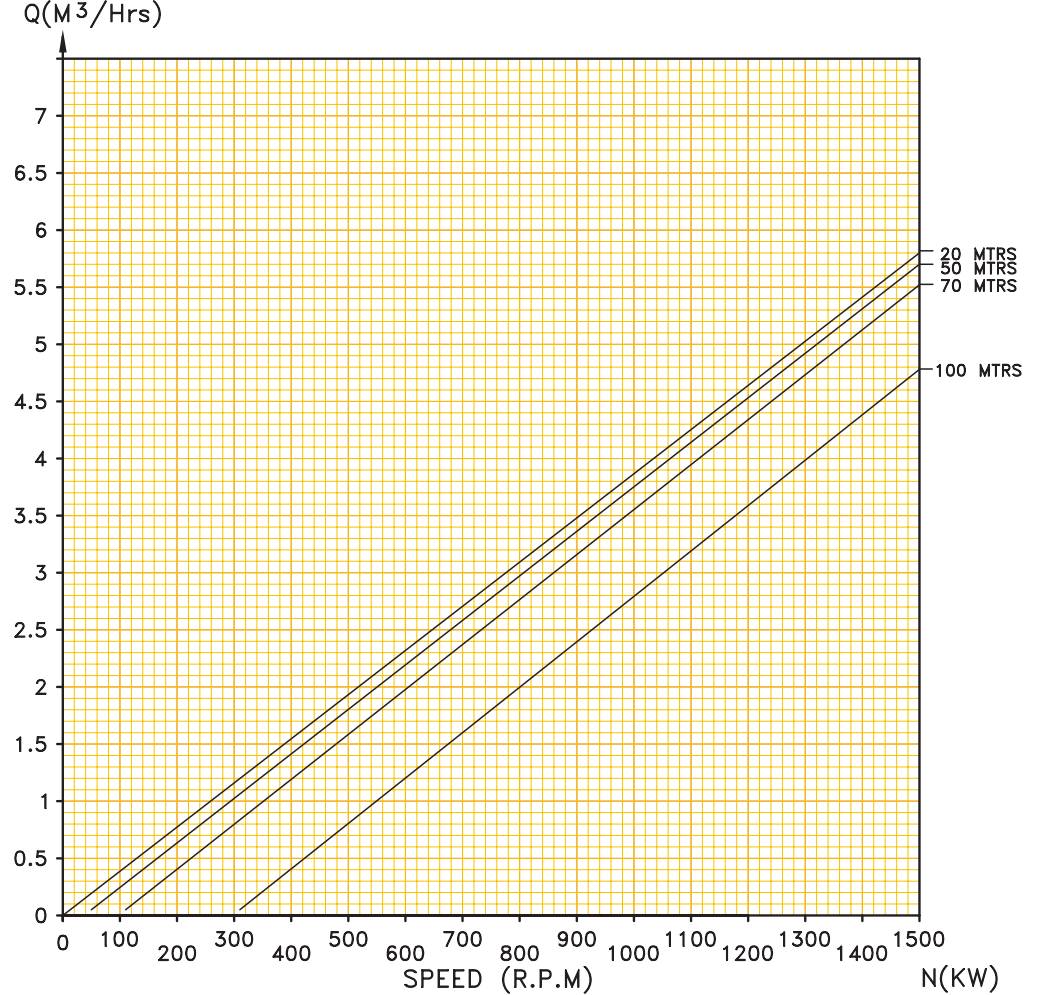
KX - 40 PK 2

KX - 62 PK 2

KX - 100 PK 2

	HYDRO PROKAV PUMPS CHARACTERISTIC CURVE	PUMP SIZE :KX 6PK 2 STABH No. : HR 312/02
	TESTED ON WATER @ 30°C STARTING TORQUE : 30 nm SHORE HARDNESS 70° SHORE	SOLID HANDLING CAPACITY SOFT & COMPRESSABLE UPTO : 24mm HARD & ANGULAR UPTO : 6mm

NOT ORIGINAL



KX 3.1.9.01/07.99

Performance Curve

SINGLE STAGE

DOUBLE STAGE

FOUR STAGE

- [Back to Product](#)
- [KX - PK - CD / KXCC - PK - CD](#)
- [KX - PK - CF / KXCC - PK - CF](#)
- [KX - PK - SF / KXCC - PK - SF](#)
- [KXW - PK - MS / KXWCC PK - MS](#)
- [KXW - PK - SF / KXWCC - PK - SF](#)

Performance Curve

DOUBLE STAGE

KX - 0.4 PK 2

KX - 2.6 PK 2

KX - 6 PK 2


KX - 13 PK 2

KX - 25 PK 2

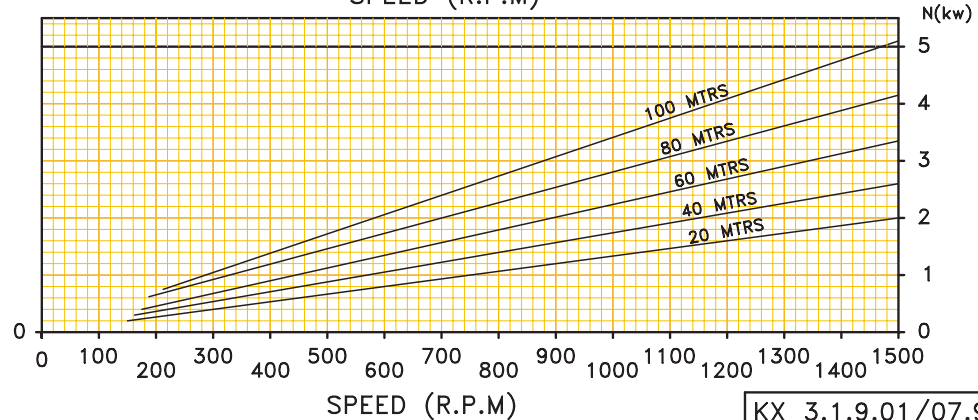
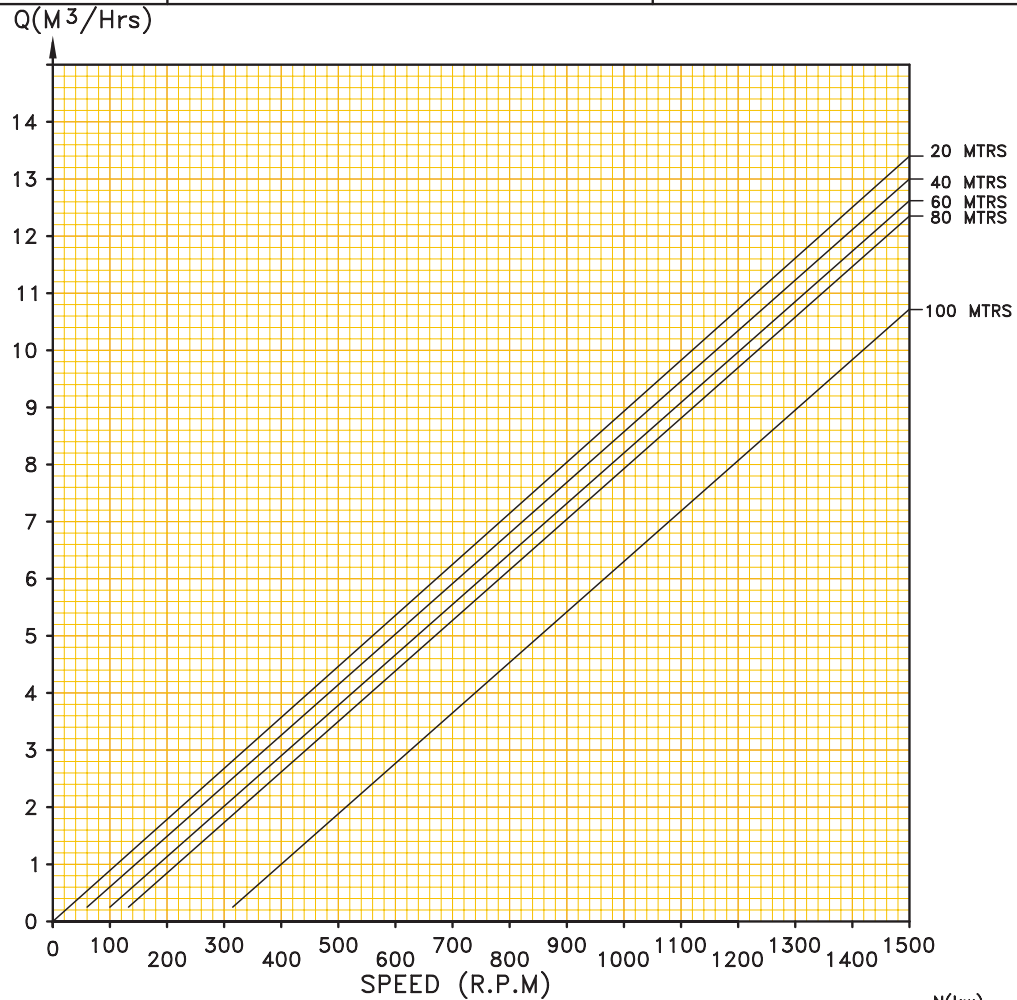
KX - 40 PK 2

KX - 62 PK 2

KX - 100 PK 2

	HYDRO PROKAV PUMPS CHARACTERISTIC CURVE	PUMP SIZE : KX 13 PK 2 STABH No. : HPR 317/01
	TESTED ON WATER @ 30°C STARTING TORQUE : 30 Nm SHORE HARDNESS 70° SHORE	SOLID HANDLING CAPACITY SOFT & COMPRESSABLE UPTO : 28mm HARD & ANGULAR UPTO : 7mm

NOT ORIGINAL



KX 3.1.9.01/07.99

Performance Curve

SINGLE STAGE

DOUBLE STAGE

FOUR STAGE

- [Back to Product](#)
- [KX - PK - CD / KXCC - PK - CD](#)
- [KX - PK - CF / KXCC - PK - CF](#)
- [KX - PK - SF / KXCC - PK - SF](#)
- [KXW - PK - MS / KXWCC PK - MS](#)
- [KXW - PK - SF / KXWCC - PK - SF](#)

Performance Curve

DOUBLE STAGE

KX - 0.4 PK 2

KX - 2.6 PK 2

KX - 6 PK 2

KX - 13 PK 2

KX - 25 PK 2

KX - 40 PK 2

KX - 62 PK 2

KX - 100 PK 2



HYDRO PROKAV PUMPS

PUMP SIZE :KX-25-PK2

CHARACTERISTIC CURVE

STABH No. : HPR 319/01

TESTED ON
WATER @ 30°C

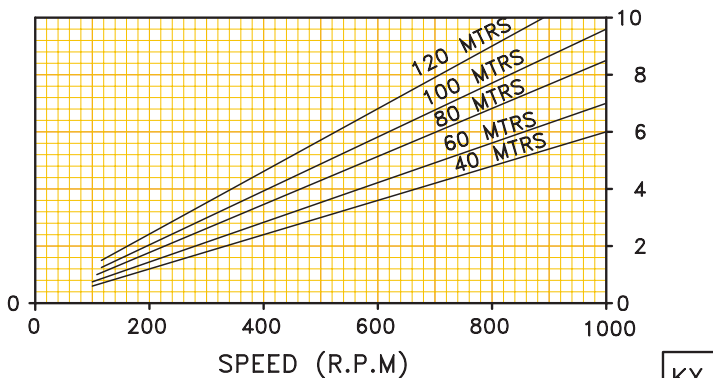
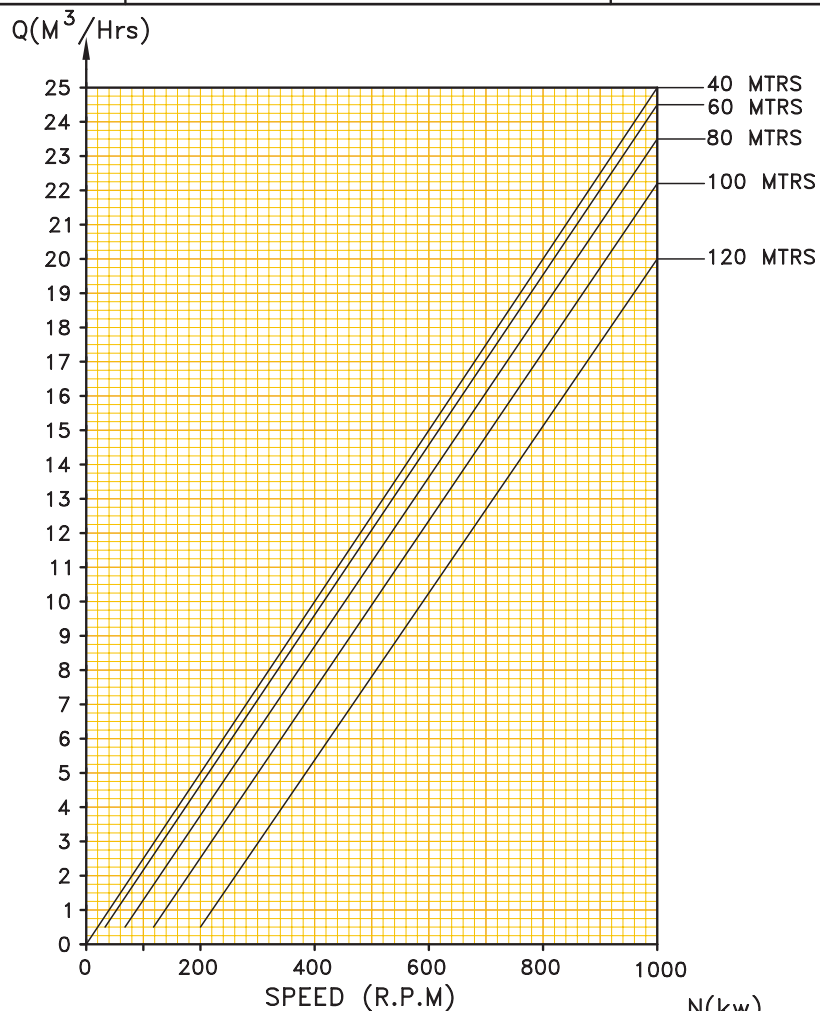
STARTING TORQUE : 90 Nm

STATOR HARDNESS 70° SHORE

SOLID HANDLING CAPACITY

SOFT & COMPRESSABLE UPTO : 40mm

HARD & ANGULAR UPTO : 10mm



KX 3.1.9.01/07.99

Performance Curve

SINGLE STAGE

DOUBLE STAGE

FOUR STAGE

• [Back to Product](#)

• [KX - PK - CD / KXCC - PK - CD](#)

• [KX - PK - CF / KXCC - PK - CF](#)

• [KX - PK - SF / KXCC - PK - SF](#)

• [KXW - PK - MS / KXWCC PK - MS](#)

• [KXW - PK - SF / KXWCC - PK - SF](#)

Performance Curve

DOUBLE STAGE

KX - 0.4 PK 2

KX - 2.6 PK 2

KX - 6 PK 2


KX - 13 PK 2

KX - 25 PK 2

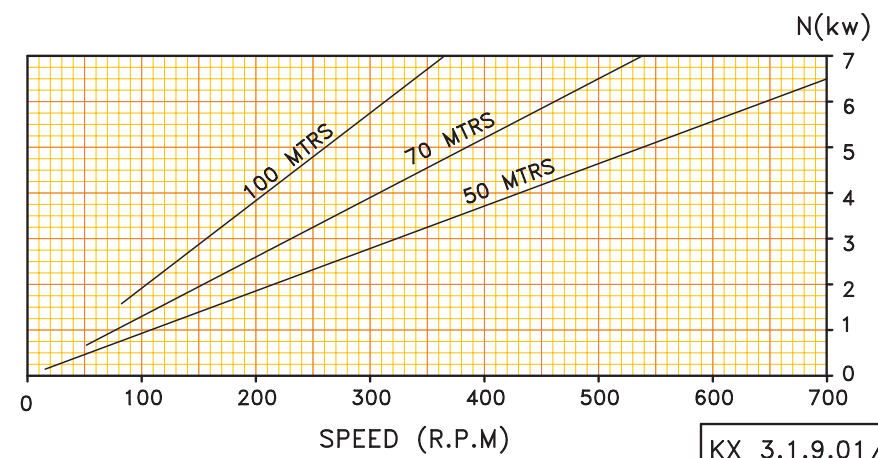
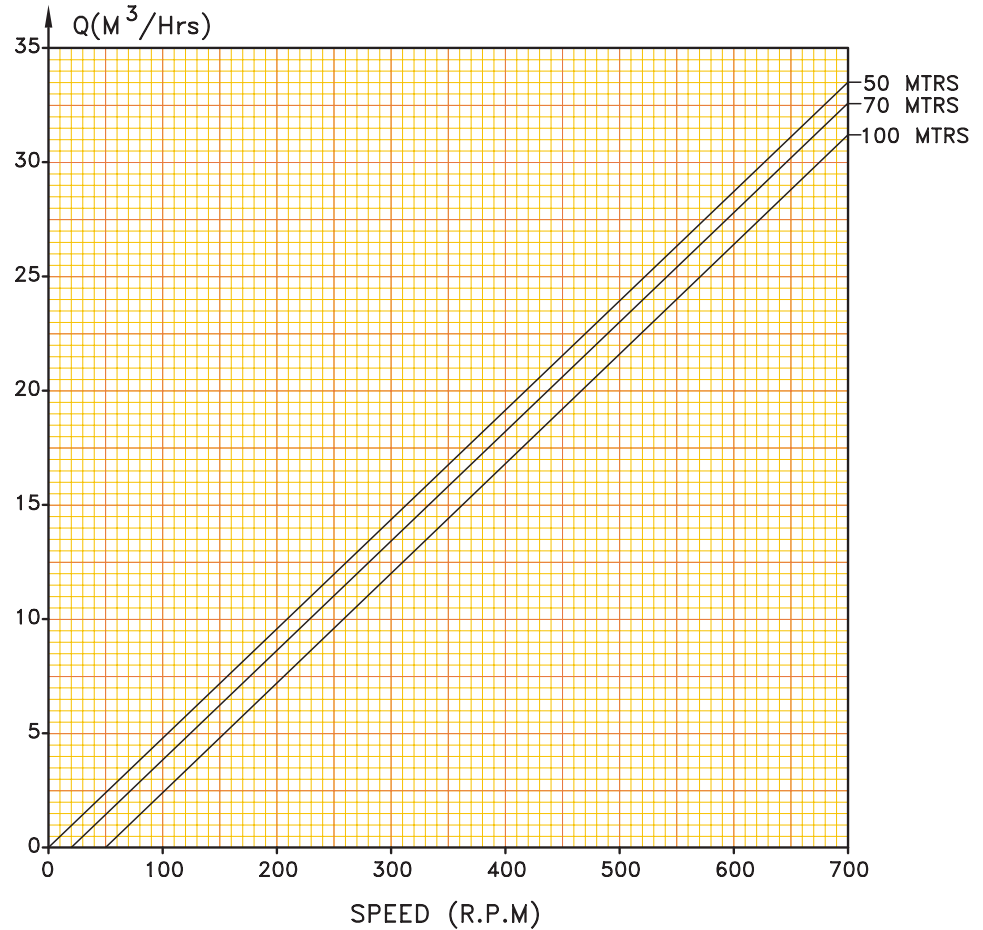
KX - 40 PK 2

KX - 62 PK 2

KX - 100 PK 2

	HYDRO PROKAV PUMPS CHARACTERISTIC CURVE	PUMP SIZE : KX-40PK2 STABH No. : HPR 3520/02
	TESTED ON WATER @ 30°C	STARTING TORQUE : 200 Nm SHORE HARDNESS 70° SHORE

NOT ORIGINAL



KX 3.1.9.01/07.99

Performance Curve

SINGLE STAGE

DOUBLE STAGE

FOUR STAGE

- [Back to Product](#)
- [KX - PK - CD / KXCC - PK - CD](#)
- [KX - PK - CF / KXCC - PK - CF](#)
- [KX - PK - SF / KXCC - PK - SF](#)
- [KXW - PK - MS / KXWCC PK - MS](#)
- [KXW - PK - SF / KXWCC - PK - SF](#)

Performance Curve

DOUBLE STAGE

KX - 0.4 PK 2

KX - 2.6 PK 2

KX - 6 PK 2

KX - 13 PK 2

KX - 25 PK 2

KX - 40 PK 2

KX - 62 PK 2

KX - 100 PK 2



HYDRO PROKAV PUMPS

CHARACTERISTIC CURVE

PUMP SIZE : KX-62 PK 2

STABH No. : HPR 323 / 03

TESTED ON
WATER @ 30°C

STARTING TORQUE : 700 Nm

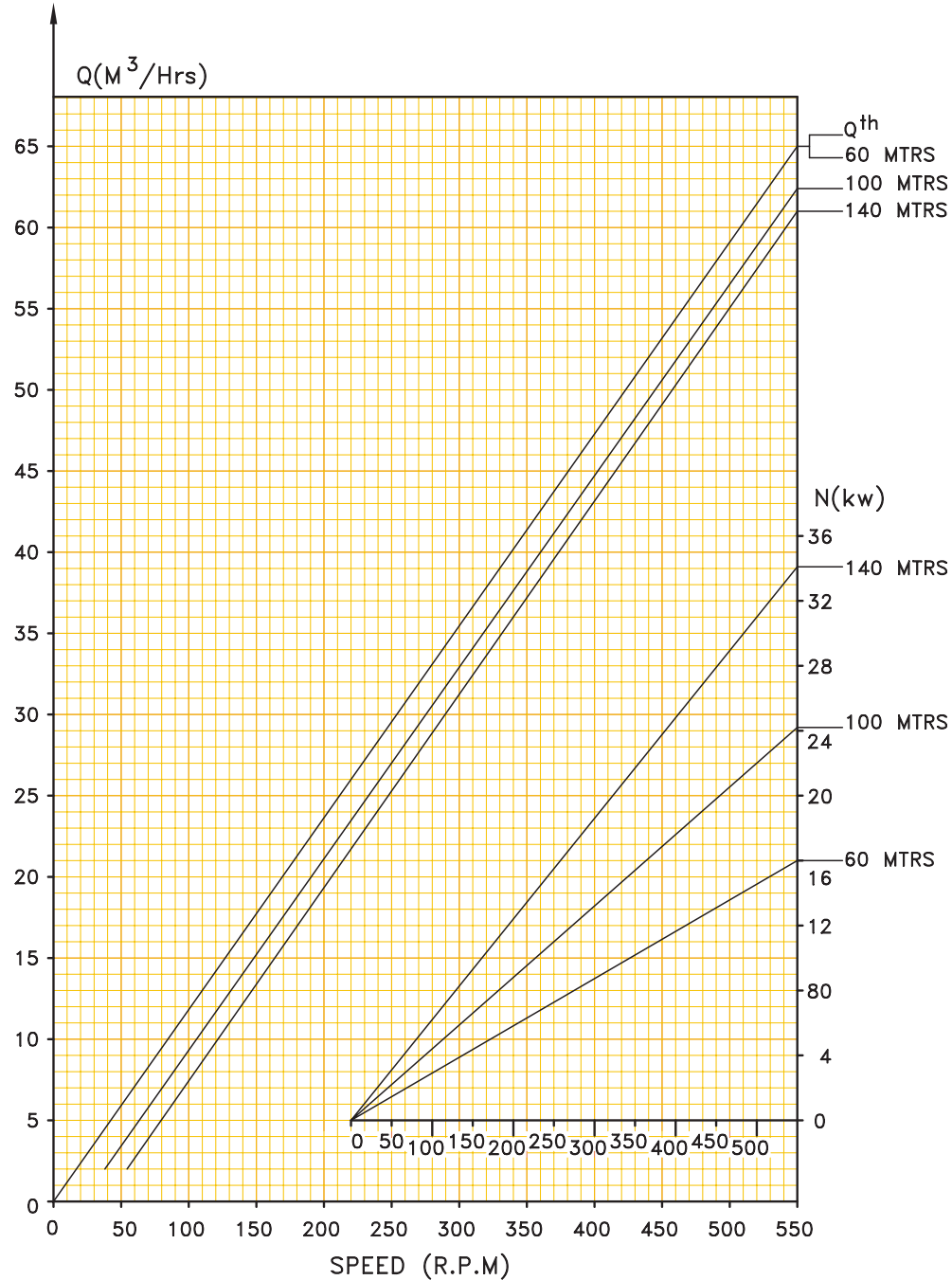
SHORE HARDNESS 70° SHORE

SOLID HANDLING CAPACITY

SOFT & COMPRESSABLE UPTO : 64mm

HARD & ANGULAR UPTO : 16mm

NOT ORIGINAL



KX 3.1.9.01/07.99

Performance Curve

SINGLE STAGE

DOUBLE STAGE

FOUR STAGE

• [Back to Product](#)

• [KX - PK - CD / KXCC - PK - CD](#)

• [KX - PK - CF / KXCC - PK - CF](#)

• [KX - PK - SF / KXCC - PK - SF](#)

• [KXW - PK - MS / KXWCC PK - MS](#)

• [KXW - PK - SF / KXWCC - PK - SF](#)

Performance Curve

DOUBLE STAGE

KX - 0.4 PK 2

KX - 2.6 PK 2

KX - 6 PK 2

KX - 13 PK 2

KX - 25 PK 2

KX - 40 PK 2

KX - 62 PK 2

KX - 100 PK 2



HYDRO PROKAV PUMPS

CHARACTERISTIC CURVE

PUMP SIZE : KX-100 PK 2

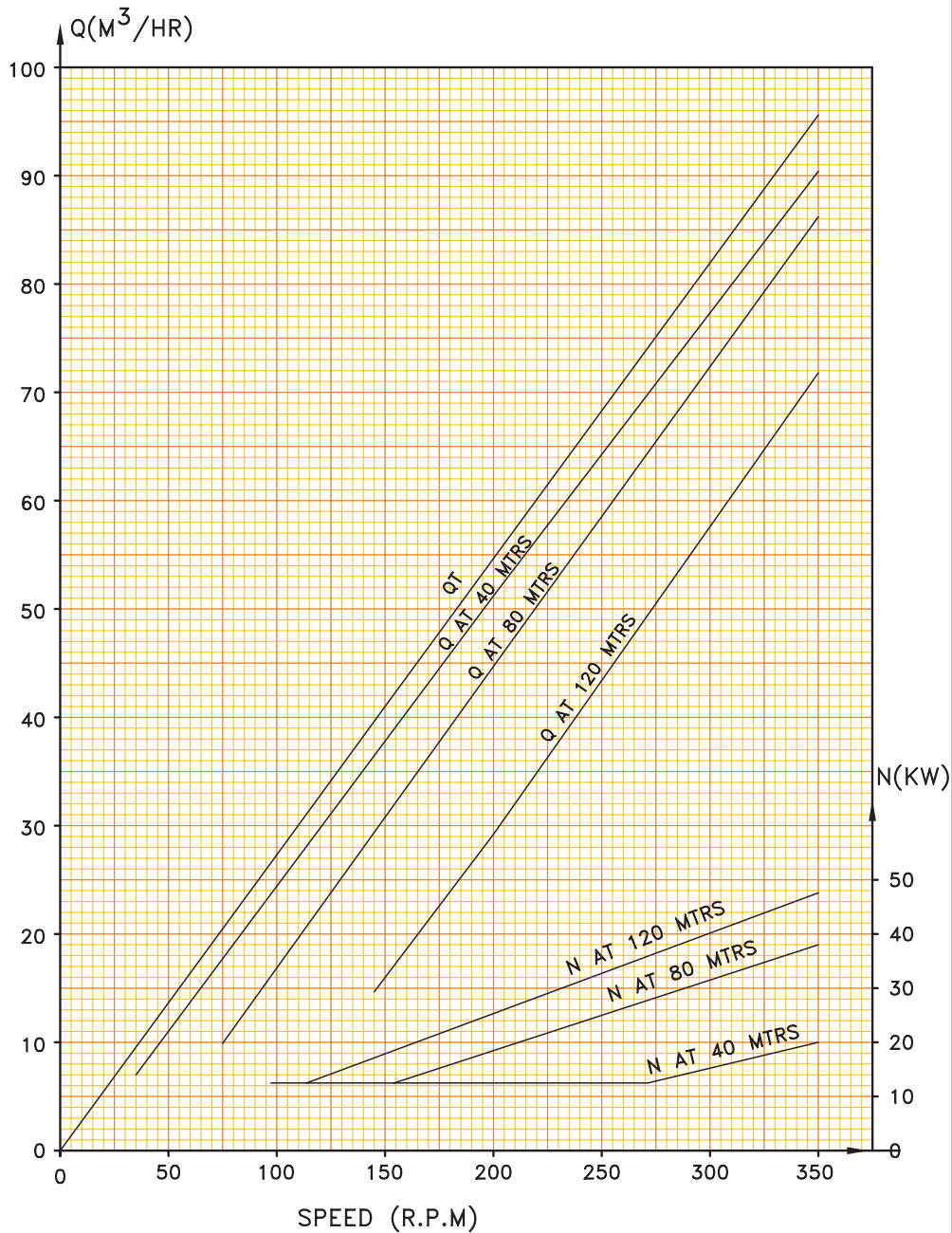
STABH No. : HPR/375/02

TESTED ON
WATER @ 30°C

STARTING TORQUE :
STATOR HARDNESS = 70° SHORE

SOLID HANDLING CAPACITY
SOFT & COMPRESSABLE UPTO : 80mm
HARD & ANGULAR UPTO : 20mm

NOT ORIGINAL



Performance Curve

SINGLE STAGE

DOUBLE STAGE

FOUR STAGE

• [Back to Product](#)

• [KX - PK - CD / KXCC - PK - CD](#)

• [KX - PK - CF / KXCC - PK - CF](#)

• [KX - PK - SF / KXCC - PK - SF](#)

• [KXW - PK - MS / KXWCC PK - MS](#)

• [KXW - PK - SF / KXWCC - PK - SF](#)

Performance Curve

FOUR STAGE

KX - 0.4 PK - 4

KX - 2.6 PK - 4

KX - 13 PK - 4

KX - 40 PK - 4

KX - 62 PK - 4



HYDRO PROKAV PUMPS

PUMP SIZE : KX 0.4PK4

CHARACTERISTIC CURVE

GEAR No. : HEP/33/03

TESTED ON
WATER @ 30°C

STARTING TORQUE :

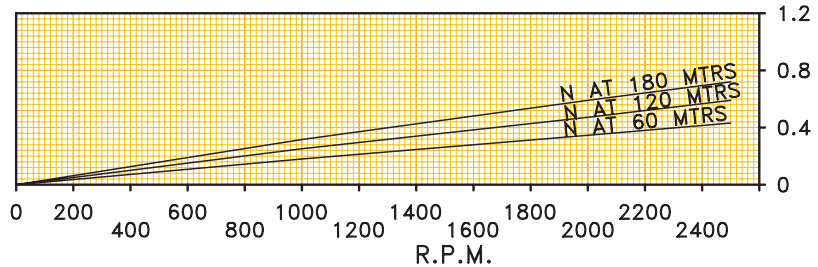
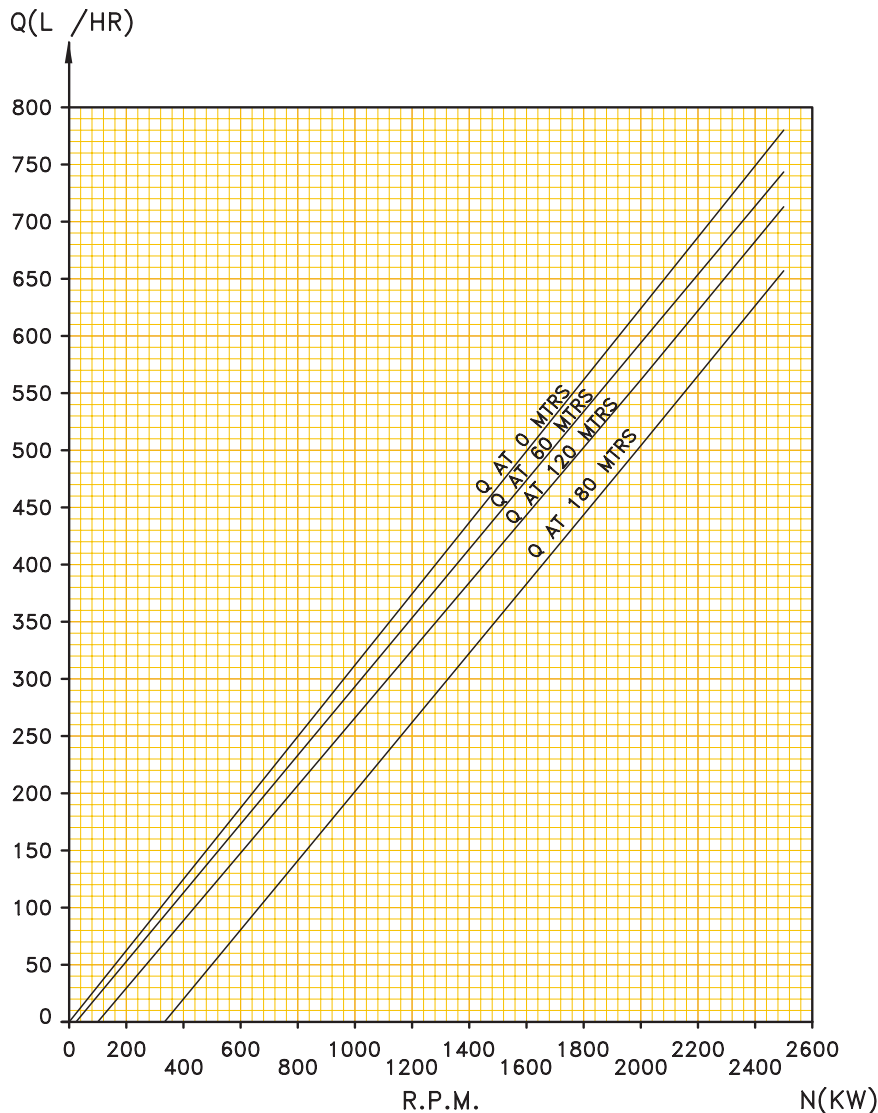
SOLID HANDLING CAPACITY :

STATOR HARDNESS = 70° SHORE

SOFT & COMPRESSABLE UPTO : 8 mm

MIN. REC. MOTOR :

HARD & ANGULAR UPTO : 2 mm



Performance Curve

SINGLE STAGE

DOUBLE STAGE

FOUR STAGE

• [Back to Product](#)

• [KX - PK - CD / KXCC - PK - CD](#)

• [KX - PK - CF / KXCC - PK - CF](#)

• [KX - PK - SF / KXCC - PK - SF](#)

• [KXW - PK - MS / KXWCC PK - MS](#)

• [KXW - PK - SF / KXWCC - PK - SF](#)

Performance Curve

FOUR STAGE


KX - 0.4 PK - 4

KX - 2.6 PK - 4

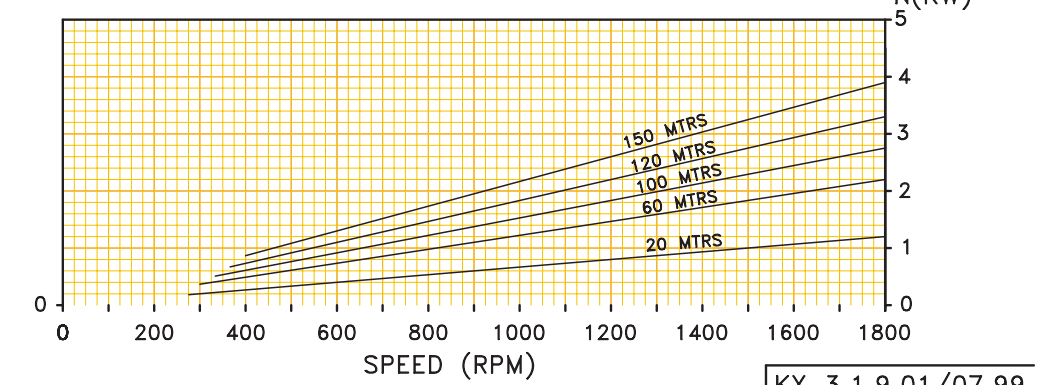
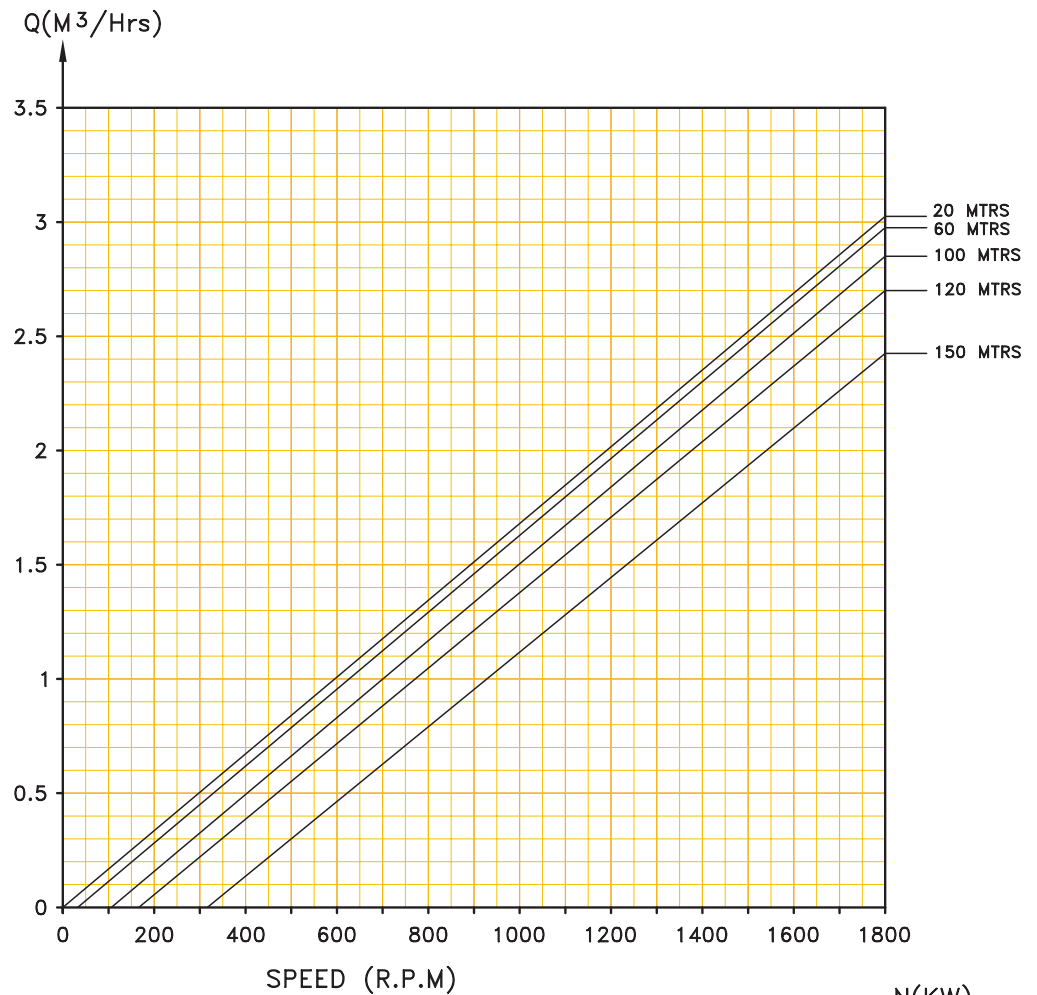
KX - 13 PK - 4

KX - 40 PK - 4

KX - 62 PK - 4

	HYDRO PROKAV PUMPS CHARACTERISTIC CURVE	PUMP SIZE : 2.6PK 4 STABH No. : HPR 315/C1
	TESTED ON WATER @ 30°C STARTING TORQUE : 35 Nm STATOR HARDNESS = 70° SHORE	SOLID HANDLING CAPACITY SOFT & COMPRESSABLE UPTO : 16mm HARD & ANGULAR UPTO : 4mm

NOT ORIGINAL



KX 3.1.9.01/07.99

Performance Curve

SINGLE STAGE

DOUBLE STAGE

FOUR STAGE

• [Back to Product](#)

• KX - PK - CD / KXCC - PK - CD

• KX - PK - CF / KXCC - PK - CF

• KX - PK - SF / KXCC - PK - SF

• KXW - PK - MS / KXWCC PK - MS

• KXW - PK - SF / KXWCC - PK - SF

Performance Curve

FOUR STAGE

KX - 0.4 PK - 4

KX - 2.6 PK - 4

KX - 13 PK - 4

KX - 40 PK - 4

KX - 62 PK - 4



HYDRO PROKAV PUMPS

CHARACTERISTIC CURVE

PUMP SIZE : KX 13 PK 4

STABH No. : HPR 317/02

TESTED ON
WATER @ 30°C

STARTING TORQUE : 60 Nm

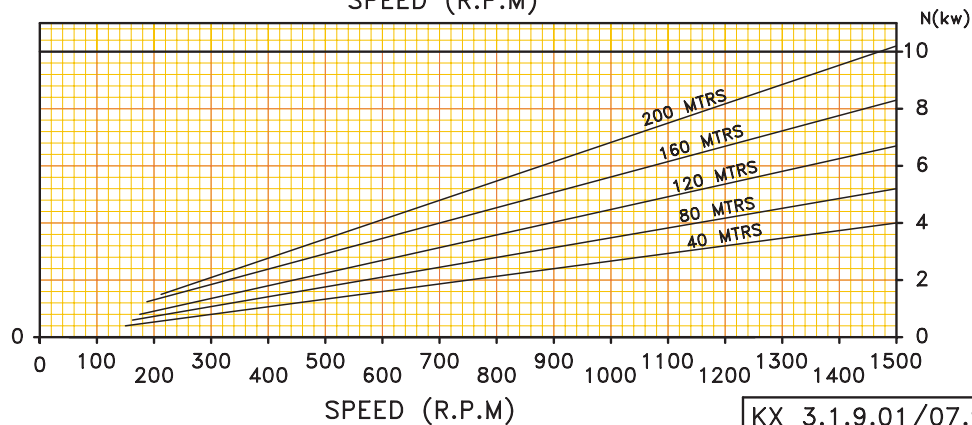
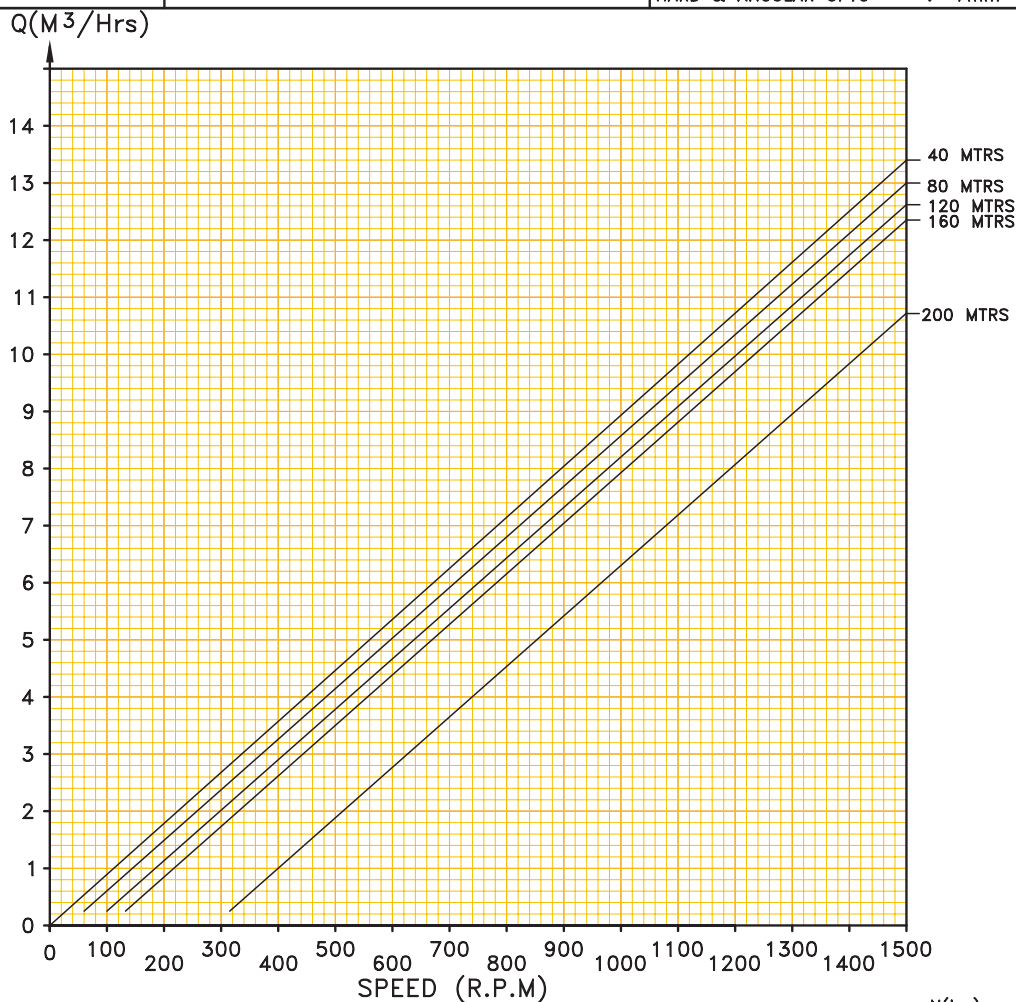
SHORE HARDNESS 70° SHORE

SOLID HANDLING CAPACITY

SOFT & COMPRESSABLE UPTO : 28mm

HARD & ANGULAR UPTO : 7mm

NOT ORIGINAL



KX 3.1.9.01/07.99

Performance Curve

SINGLE STAGE

DOUBLE STAGE

FOUR STAGE

• [Back to Product](#)

• [KX - PK - CD / KXCC - PK - CD](#)

• [KX - PK - CF / KXCC - PK - CF](#)

• [KX - PK - SF / KXCC - PK - SF](#)

• [KXW - PK - MS / KXWCC PK - MS](#)

• [KXW - PK - SF / KXWCC - PK - SF](#)

Performance Curve

FOUR STAGE

KX - 0.4 PK - 4

KX - 2.6 PK - 4

KX - 13 PK - 4

KX - 40 PK - 4

KX - 62 PK - 4



HYDRO PROKAV PUMPS

CHARACTERISTIC CURVE

PUMP SIZE : KX-40 PK 4

STABH No. : H.P. 3521/01

TESTED ON
WATER @ 30°C

STARTING TORQUE : 350 Nm

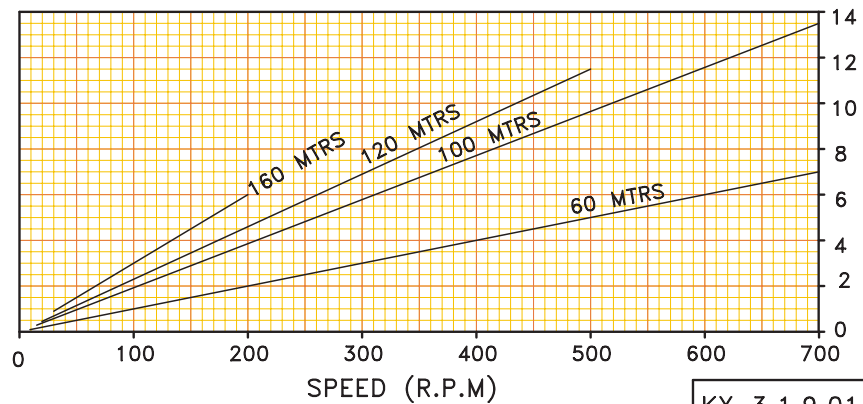
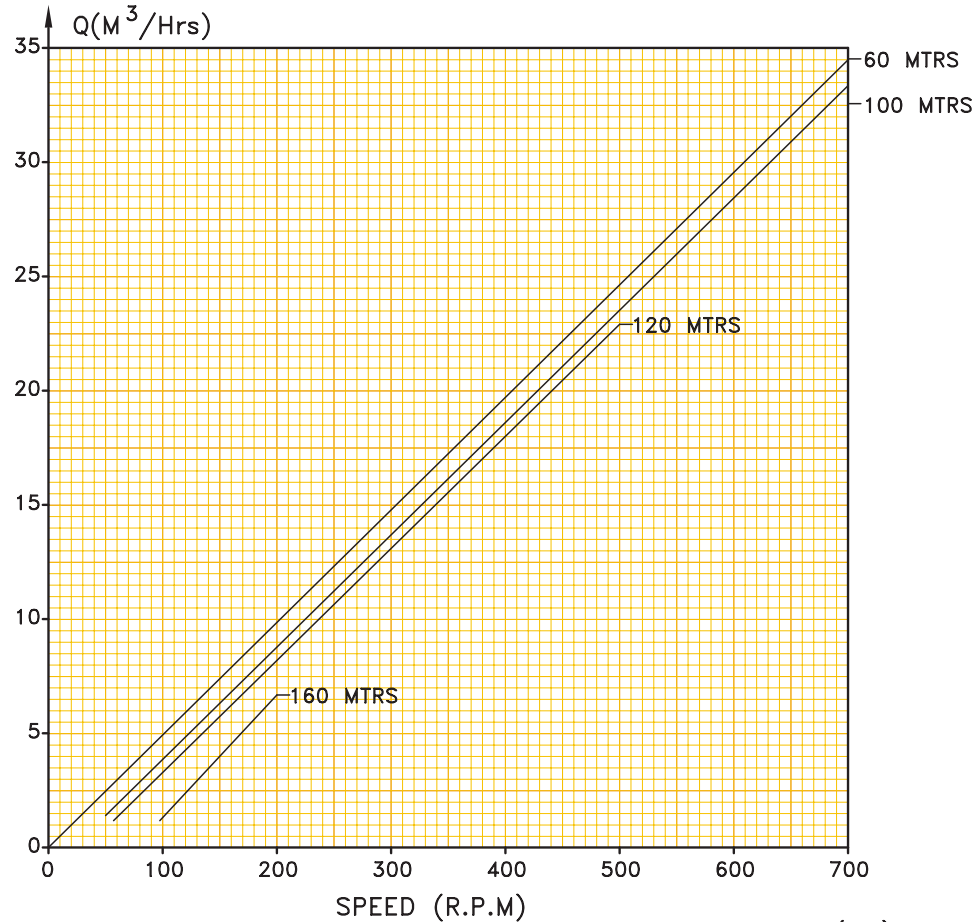
STATOR HARDNESS = 70° SHORE

SOLID HANDLING CAPACITY

SOFT & COMPRESSABLE UPTO : 48mm

HARD & ANGULAR UPTO : 12mm

NOT ORIGINAL



KX 3.1.9.01/07.99

Performance Curve

SINGLE STAGE

DOUBLE STAGE

FOUR STAGE

• [Back to Product](#)

• [KX - PK - CD / KXCC - PK - CD](#)

• [KX - PK - CF / KXCC - PK - CF](#)

• [KX - PK - SF / KXCC - PK - SF](#)

• [KXW - PK - MS / KXWCC PK - MS](#)

• [KXW - PK - SF / KXWCC - PK - SF](#)

Performance Curve

FOUR STAGE

KX - 0.4 PK - 4

KX - 2.6 PK - 4

KX - 13 PK - 4

KX - 40 PK - 4

KX - 62 PK - 4



HYDRO PROKAV PUMPS

CHARACTERISTIC CURVE

PUMP SIZE : KX-62 PK 4

STABH No. : HPR 323 / 03

TESTED ON
WATER @ 30°C

STARTING TORQUE : 700 Nm

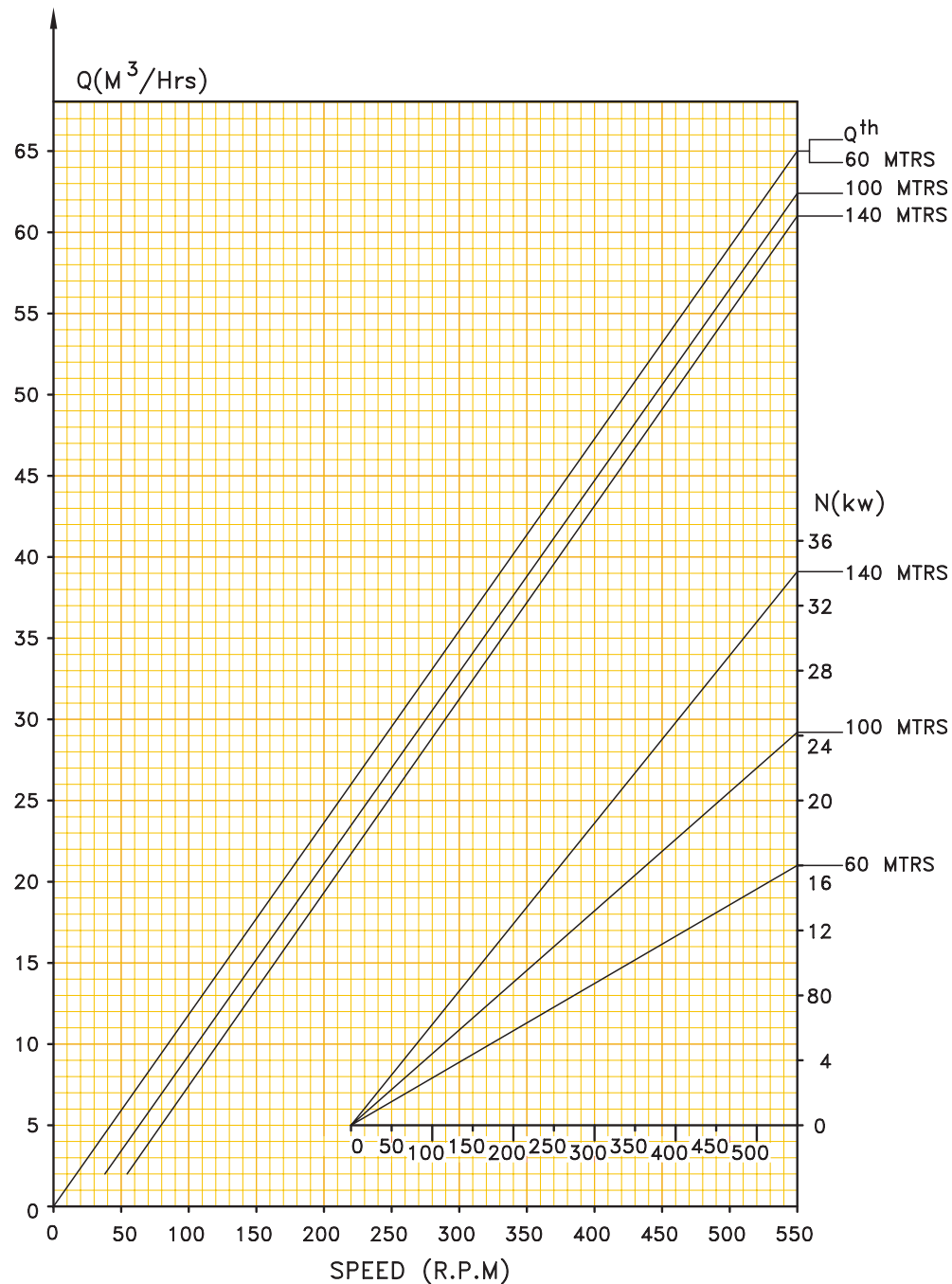
SHORE HARDNESS 70° SHORE

SOLID HANDLING CAPACITY

SOFT & COMPRESSABLE UPTO : 64mm

HARD & ANGULAR UPTO : 16mm

NOT ORIGINAL



KX 3.1.9.01/07.99

Performance Curve

SINGLE STAGE

DOUBLE STAGE

FOUR STAGE

• [Back to Product](#)

• [KX - PK - CD / KXCC - PK - CD](#)

• [KX - PK - CF / KXCC - PK - CF](#)

• [KX - PK - SF / KXCC - PK - SF](#)

• [KXW - PK - MS / KXWCC PK - MS](#)

• [KXW - PK - SF / KXWCC - PK - SF](#)



Infrastructure

State-of-the-art infrastructure allows Hydro Prokav to provide the customers with exceptional quality service and products that focuses on exceeding the customers expectations.

S.no	Description	Make
1.	CNC Vertical Machining Centre with Digital Readout	WMW Germany
2.	CNC Vertical Machining Centre with Digital Readout	WMW Germany
3.	CNC Vertical Machining Centre with Digital Readout	WMW Germany
4.	Vertical TURRET Lathes	WMW Germany, STANKOIMPORT, Russia, ALAROID, UK
5.	CNC regenerative CAM profile milling machine	WMW Germany
6.	Long thread milling machine with digital read	WMW Germany
7.	Center Lathe with whirling Heads	VFD, Germany HMT, India, Cooper
8.	Radial Drilling Machines Cooper	Cooper
9.	Hydraulic Press	Parmer
10.	Rubber Machineries	
11.	Computerised Test Bed, Profile Projection Analysers & Various Other Testing instruments and Equipments	



Quality Standards

Quality Policy

We established ourselves as a company providing innovative and quality products to our customers.

Our services are uncompromising on quality and we always look forward to delight our customers with our value-added products.





Feedback

Name

Company

Position

Address

Email ID

Phone No.

Describe your requirements :

Press Submit
Then Press ALLOW to Send



HYDRO PROKAV

Proven Performance for Better Pumping Solutions

NOT ORIGINAL



[| Home](#) | [| Profile](#) | [| Products](#) | [| Infrastructure](#) | [| Quality Standards](#) | [| Feedback](#) | [| Contact](#) | [| Exit](#) |

Contact

HYDRO PROKAV PUMPS INDIA PRIVATE LIMITED

S.F.No.170/2, 170/3,
Private Industrial Estate , SIDCO
Coimbatore - 641021 ,
Tamil Nadu, India.

Phone :+91-422-4301900,3242220.

Fax: 91 - 422 - 2679476

E-mail: hydroprokav@vsnl.net

SRINIVASA GIRI
+91 93632 61179

sgiri@hppumps.com

S.SRIDHAR
+91 99449 35334

ssridhar@hppumps.com

PRIYA C. VARMA
+91 99449 35332

priya@hppumps.com

G.VENKATESAN
+91 93451 48440

gvenkatesan@hppumps.com